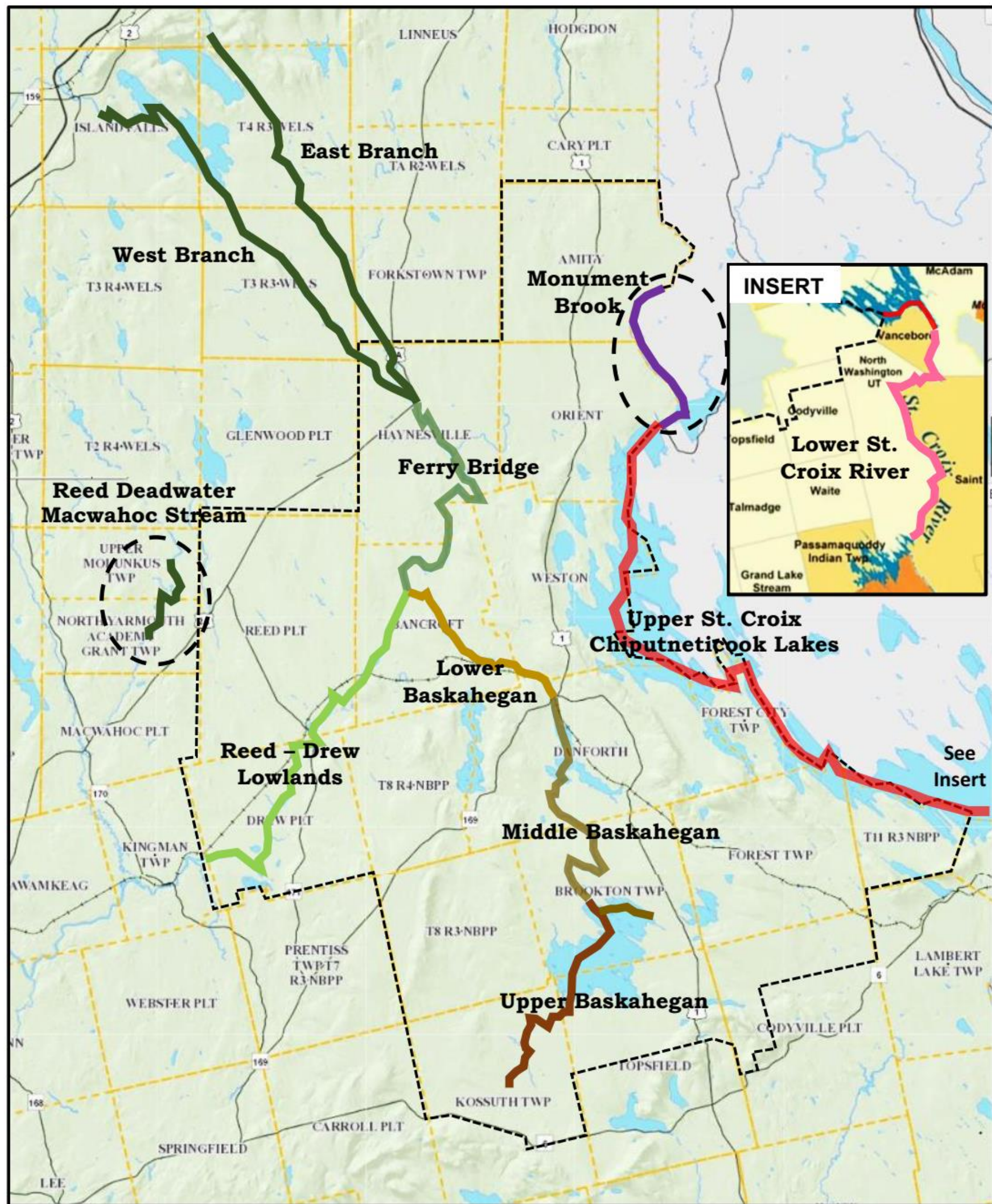


Greater East Grand Region

Recreational Trails Water

Draft 1-27-2020

WATER TRAILS – DRAFT 12-20-19



DRAFT

GREATER EAST GRAND LAKE REGION - WATER TRAILS

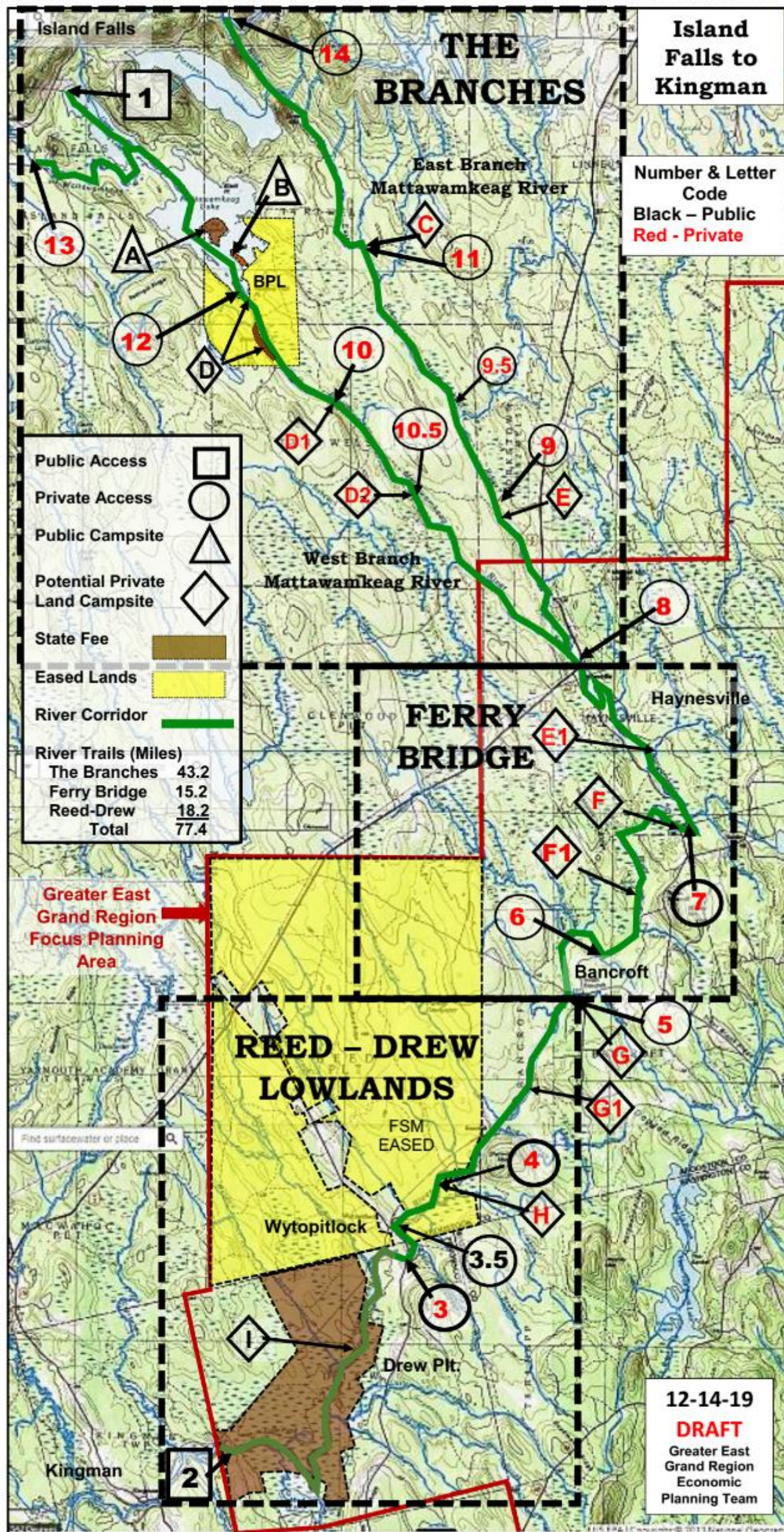
<u>Water</u>	<u>Trail</u>	<u>Segment</u>	<u>Distance</u>	<u>Flow</u>	<u>Class</u>	<u>Propulsion</u>
Baskahegan Stream						
	White Farm Road Put-In To Lake	Upper River	8.05	NF2	Flat - Class I	P
	Inlet of Lake to Outlet	Upper River	4.75	Lake	Flat	P - M
	Lake Landing to Chucks Road	Middle River	8.35	NF1	Flat - Class I	P
	Chucks Road to Danforth	Middle River	7.80	NF2	Class I to Flat	P
	Danforth to 2000 Road	Lower River	<u>8.85</u>	NF1	Class I, II	P
			37.80			
Mattawamkeag River						
	West Branch - Island Falls to L. Lake Outlet	West Branch	9.75	NF- Lake	Flat	P - M
	West Branch - Outlet to Haynesville	West Branch	12.35	NF1/2	Class Flat, I, II	P
	East Branch - S. Oakfield Rd to Bells Field	East Branch	14.95	NF2	Class I, II	P
	East Branch - Bells Field to Haynesville	East Branch	4.95	NF2	Class I, II	P
	Haynesville to Ferry Bridge	Ferry Bridge	7.20	NF	Flat, Class 1	P - M
	Ferry Bridge to Bancroft	Ferry Bridge	8.00	NF1/2	Flat - Class I, II	P - m
	Baskahegan Confluence to Drew Bridge	Reed-Drew Lowlands	9.50	NF1	Flat, Class I	P - M
	Drew Bridge to Page Farm	Reed-Drew Lowlands	<u>8.65</u>	NF	Flat	P - M
			75.35			
St. Croix Rver						
	Orient Customs to FC Dam	East Grand	14.00	Lake	Flat	P - M
	FC Dam to Spednic	River - Mud Lake	4.00	NF - Portage	Class I, Flat	P
	Booming Grounds to Vanceboro	Spednic Lake	21.50	Lake	Flat	P - M
	Vanceboro to Loon Bay	St. Croix	<u>22.00</u>	NF	Class I to III	P
			61.50			
Monument Stream						
	NB Customs - P.line (Miles are one-way)		4.50	NF-Lake	Flat	P - M
	P. Line (Narrows) to Clark Brook		<u>5.00</u>	NF	Flat	P - M
			9.50			
Reed Deadwater						
	Off Eastern Road - T1R4 WELS		4.00	NF1	Flat -Class I	P
	GRAND TOTAL		188.15			

Note

NF = Natural Flow - Mostly Navigable
 NF1= Natural Flow - Loss of water moderate
 NF2-Natural Flow - Loss of water severe

P = Paddle
 M= Motorized

MIDDLE MATTAWAMKEAG RIVER - A WATER TRAILS CONCEPT

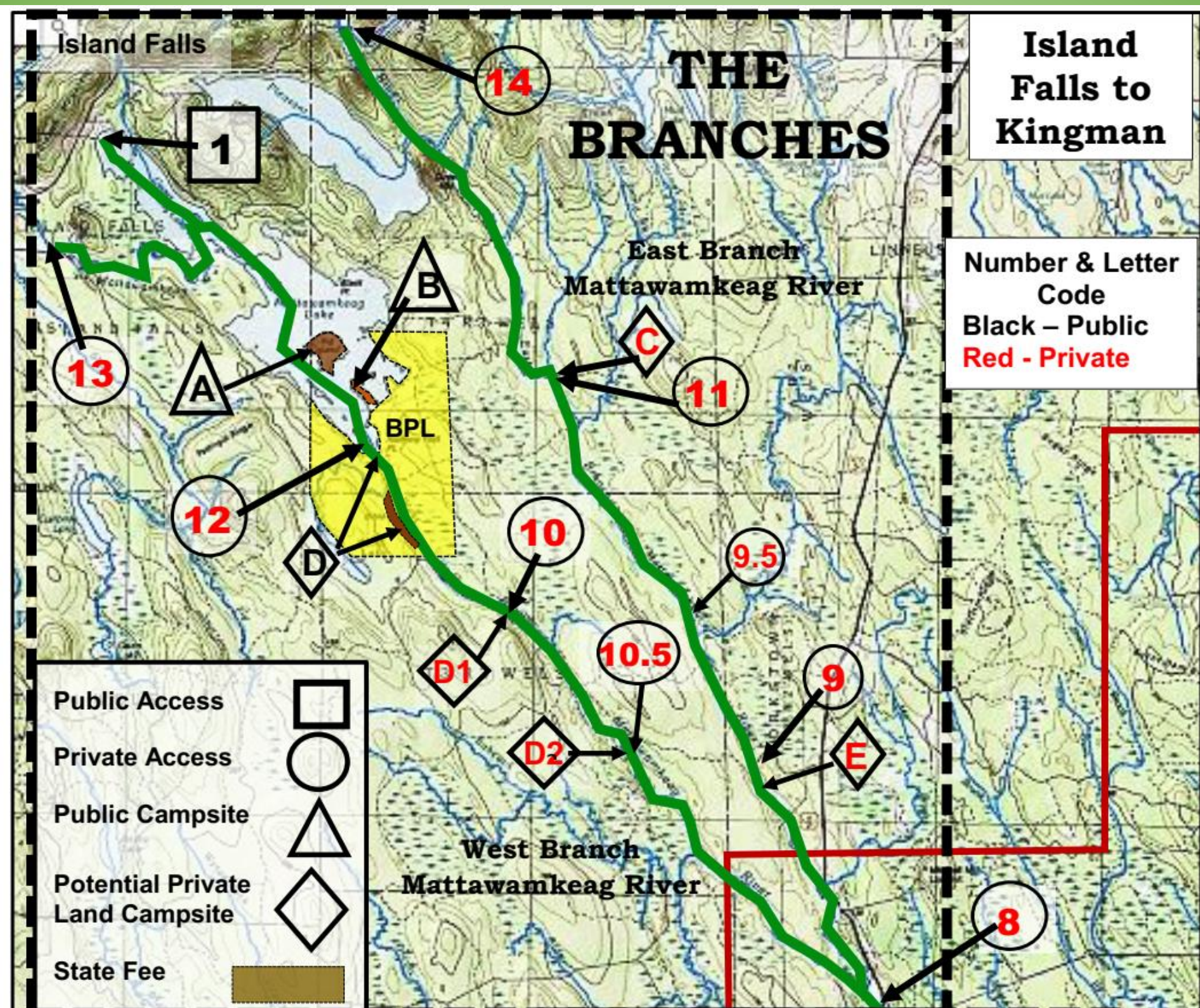


THIS MAP DEPICTION IS PREPARED FOR DISCUSSION PURPOSES ONLY

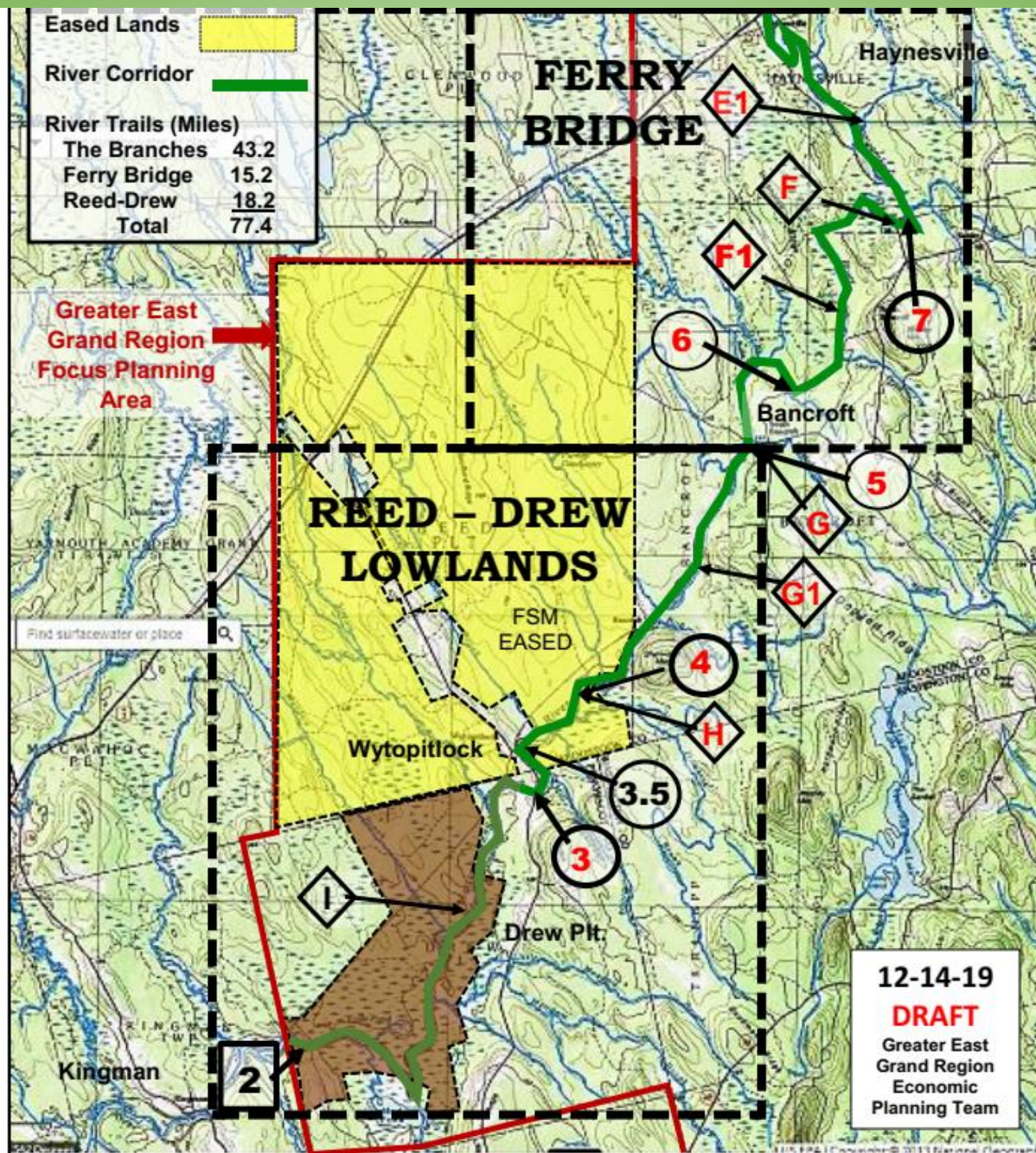
DRAFT - DECEMBER 12, 2019- Revised 12-14-19

Mattawamkeag River Mileage Summary

<u>Segment</u>	<u>Section</u>	<u>From</u>	<u>To</u>	<u>Mileage</u>	<u>Remarks</u>
<u>THE BRANCHES</u>					
<u>West Branch</u>	Upper Mattawamkeag	Public Landing	Inlet West Branch	2.00	Exclude if put-in off Merriman Rd
	Above Upper Lake	Island Falls Put-In	Upper Lake	4.75	Exclude if put-in at Lake Public Landing
	The Lakes	Thoroughfare	Big Island	4.00	State Campsite
	The Lakes	Big Island	Outlet Lower Lake	1.00	
	Bible Point	Outlet	Bible Point	1.00	
	First Brook	Bible Point	Old Bridge Site	2.15	Potential Campsite - West Shore
	City Camp	Old Bridge Site	Old Kitchen Bridge	3.35	Potential Campsite - West Shore
	Babcock	Old Kitchen Bridge	Babcock	2.00	
	Confluence	Babcock	Confluence E. Branch	3.40	
	Main River	Confluence	Haynesville Take Out	<u>0.45</u>	
				24.10	(22.10 from Island Falls Merriman Rd)
<u>East Branch</u>	Pleasant Lake	South Oakfield Rd	Snowmobile Bridge	5.20	Potential Campsite - East Shore
	Skiticook	Snowmobile Bridge	Skiticook	3.00	
	Beaver Brook	Skiticook	Beaver Brook	4.25	
	Bell's Field	Beaver Brook	Bell's Field Rd	2.50	Potential Campsite - East Shore
	Haynesville	Bell's Field Rd	West Branch Confluence	4.50	
	Main River	Confluence	Haynesville Take Out	<u>0.45</u>	
				19.9	
<u>FERRY BRIDGE</u>					
<u>Main River</u>	Haynesville	Haynesville Put-In (2A)	Skagrock	4.50	
	Haynesville	Skagrock	Cold Brook	1.40	
	Haynesville	Cold Brook	Ferry Bridge	1.30	Potential Campsite - East Shore
	Haynesville	Ferry Bridge	Ledge Falls	4.00	
	Bancroft	Ledge Falls	Hinch Road (S. Bancroft)	1.50	
	Bancroft	Hinch Road (S. Bancroft)	Big Battle Brook	1.25	
	Bancroft	Big Battle Brook	Confluence Baskahegan	<u>1.25</u>	Potential Campsite - East Shore
				15.20	
<u>REED - DREW LOWLANDS</u>					
<u>Main River</u>	Smith Brook	Confluence Baskahegan	Smith Brook	3.75	Potential Campsite - Island (BCO)
	Smith Brook	Smith Brook	TCF Campsite	3.00	Potential Campsite - Island (BCO)
	Reed Plantation	TCF Campsite	Wytopitlock Put In	1.75	
	Reed Plantation	Wytopitlock Put In	Drew Bridge	0.75	
	Drew Deadwater	Drew Bridge	Wytopitlock Stream	1.00	
	Drew Deadwater	Wytopitlock Stream	River Road	0.75	
	Drew Deadwater	River Road	Meadow Brook West	2.00	
	Drew Deadwater	Meadow Brook West	Meadow Brook East	1.40	See Island with Camp - Campsite?
	Drew Deadwater	Big Meadow Brook	Inlet from Mud Lake	2.75	
	Drew Deadwater	Inlet from Mud Lake	Page Farm Boat Launch	<u>1.00</u>	
				18.15	
Grand Total Mileage				77.35	



Segment	Section	From	To	Mileage	Remarks
THE BRANCHES					
West Branch	Upper Mattawamkeag	Public Landing	Inlet West Branch	2.00	Exclude if put-in off Merriman Rd
	Above Upper Lake	Island Falls Put-In	Upper Lake	4.75	Exclude if put-in at Lake Public Landing
	The Lakes	Thoroughfare	Big Island	4.00	State Campsite
	The Lakes	Big Island	Outlet Lower Lake	1.00	
	Bible Point	Outlet	Bible Point	1.00	
	First Brook	Bible Point	Old Bridge Site	2.15	Potential Campsite - West Shore
	City Camp	Old Bridge Site	Old Kitchen Bridge	3.35	Potential Campsite - West Shore
	Babcock	Old Kitchen Bridge	Babcock	2.00	
	Confluence	Babcock	Confluence E. Branch	3.40	
	Main River	Confluence	Haynesville Take Out	0.45	
				24.10	(22.10 from Island Falls Merriman Rd)
East Branch	Pleasant Lake	South Oakfield Rd	Snowmobile Bridge	5.20	Potential Campsite - East Shore
	Skiticook	Snowmobile Bridge	Skiticook	3.00	
	Beaver Brook	Skiticook	Beaver Brook	4.25	
	Bell's Field	Beaver Brook	Bell's Field Rd	2.50	Potential Campsite - East Shore
	Haynesville	Bell's Field Rd	West Branch Confluence	4.50	
	Main River	Confluence	Haynesville Take Out	0.45	
				19.9	



FERRY BRIDGE			
Main River	Haynesville	Haynesville Put-In (2A)	Skagrock 4.50
	Haynesville	Skagrock	Cold Brook 1.40
	Haynesville	Cold Brook	Ferry Bridge 1.30 Potential Campsite - East Shore
	Haynesville	Ferry Bridge	Ledge Falls 4.00
	Bancroft	Ledge Falls	Hinch Road (S. Bancroft) 1.50
	Bancroft	Hinch Road (S. Bancroft)	Big Battle Brook 1.25
	Bancroft	Big Battle Brook	Confluence Baskahegan 1.25 Potential Campsite - East Shore
			15.20
REED - DREW LOWLANDS			
Main River	Smith Brook	Confluence Baskahegan	Smith Brook 3.75 Potential Campsite - Island (BCO)
	Smith Brook	Smith Brook	TCF Campsite 3.00 Potential Campsite - Island (BCO)
	Reed Plantation	TCF Campsite	Wytovitlock Put In 1.75
	Reed Plantation	Wytovitlock Put In	Drew Bridge 0.75
	Drew Deadwater	Drew Bridge	Wytovitlock Stream 1.00
	Drew Deadwater	Wytovitlock Stream	River Road 0.75
	Drew Deadwater	River Road	Meadow Brook West 2.00
	Drew Deadwater	Meadow Brook West	Meadow Brook East 1.40 See Island with Camp - Campsite?
	Drew Deadwater	Big Meadow Brook	Inlet from Mud Lake 2.75
	Drew Deadwater	Inlet from Mud Lake	Page Farm Boat Launch 1.00
			18.15

DRAFT - DECEMBER 12, 2019- REVISED 12-14-19 - A WORK IN PROGRESS							
Mattawamkeag River Existing & Potential Access							
Segment	Map Access No.	River Mileage	Location	Access	Status - Type	Owner	Remarks
THE BRANCHES							
West Branch	1	0.00	Upper Mattawamkeag Lake	Off Brooks Road	Public - Trailer Launch	Town Island Falls	
	13	0.00	West Branch above Lake	Merriman Road	Private - Hand Carry	Town of Island Falls	Confirm ownership of landing
	12	9.75	Outlet Lower Lake	Merriman Road	Eased - Hand Carry	BPL- Stead Timberlands	
	10	12.90	East Approach - Old Bridge Site	Bellfield Road	Private - Hand Carry	P&C Clients	
	10.5	16.25	East Approach - Old Bridge Site	Bellfield Road	Private - Hand Carry	P&C Clients	
	8	22.10	US Route 2A Bridge - Haynesville	Public Highway	Public - Trailer Launch	Town of Haynesville	Confirm ownership of landing
East Branch	14	0.00	Bridge - South Oakfield Road	South Oakfield Road	Public - Hand Carry	Town of Oakfield	Confirm ownership of landing
	11	5.20	Snowmobile Bridge	Beaver Brook Road	Private - Hand Carry	Lakeville Shores-Stead Timberlands	
	9.5	12.00	North of Beaver Brook	Joe Black Road	Private - Hand Carry	P&C Clients	
	9	14.95	Bellsfield Road Bridge	Bellfield Road	Private - Hand Carry	Penobscot Forest LLC	
	8	19.9	Route 2A Bridge - Haynesville	Public - Route 2A	Public -Trailer Launch	Town of Haynesville	Confirm ownership of landing
FERRY BRIDGE							
Main River	8	0.00	Route 2A Bridge - Haynesville	Public - Route 2A	Public -Trailer Launch	Town of Haynesville	Confirm ownership of landing
	7	7.20	Ferry Bridge	Public - Haynesville Rd	Pending Public - Trailer	State of Maine - MDIF&W	Current Owner- Lakeville Shores
	6	12.70	South Bancroft - Hinch Road	Public to private Rd	Private - Trailer Launch	Raymond Hanington	
	5	15.20	Confluence with Baskahegan	Public - Wytopitlock Rd	Private - Hand Carry	Baskahegan Company	In process of upgrade & develop
REED - DREW LOWLANDS							
Main River	5	0.00	Confluence with Baskahegan	Public - Wytopitlock Rd	Private - Hand Carry	Baskahegan Company	In process of upgrade & develop
	4	6.75	TCF Parcel - North of former F&G	Public - Wytopitlock Rd	Private - Hand Carry	TCF - Reed Forest	Potential Campsite - Island (BCO)
	3.5	8.50	Wytopitlock - Town Owned Put IN	Public - Wytopitlock Rd	Public - Hand Carry	Town of Reed Plantation	
	3	9.50	Drew Bridge	Public - Route 171	Private - Trailer Launch	Private - seeking public acquisition	
	2	18.15	Page Farm - Drew	Public - MDIF&W State	Public- Trailer Launch	MDIF&W MWM Area	

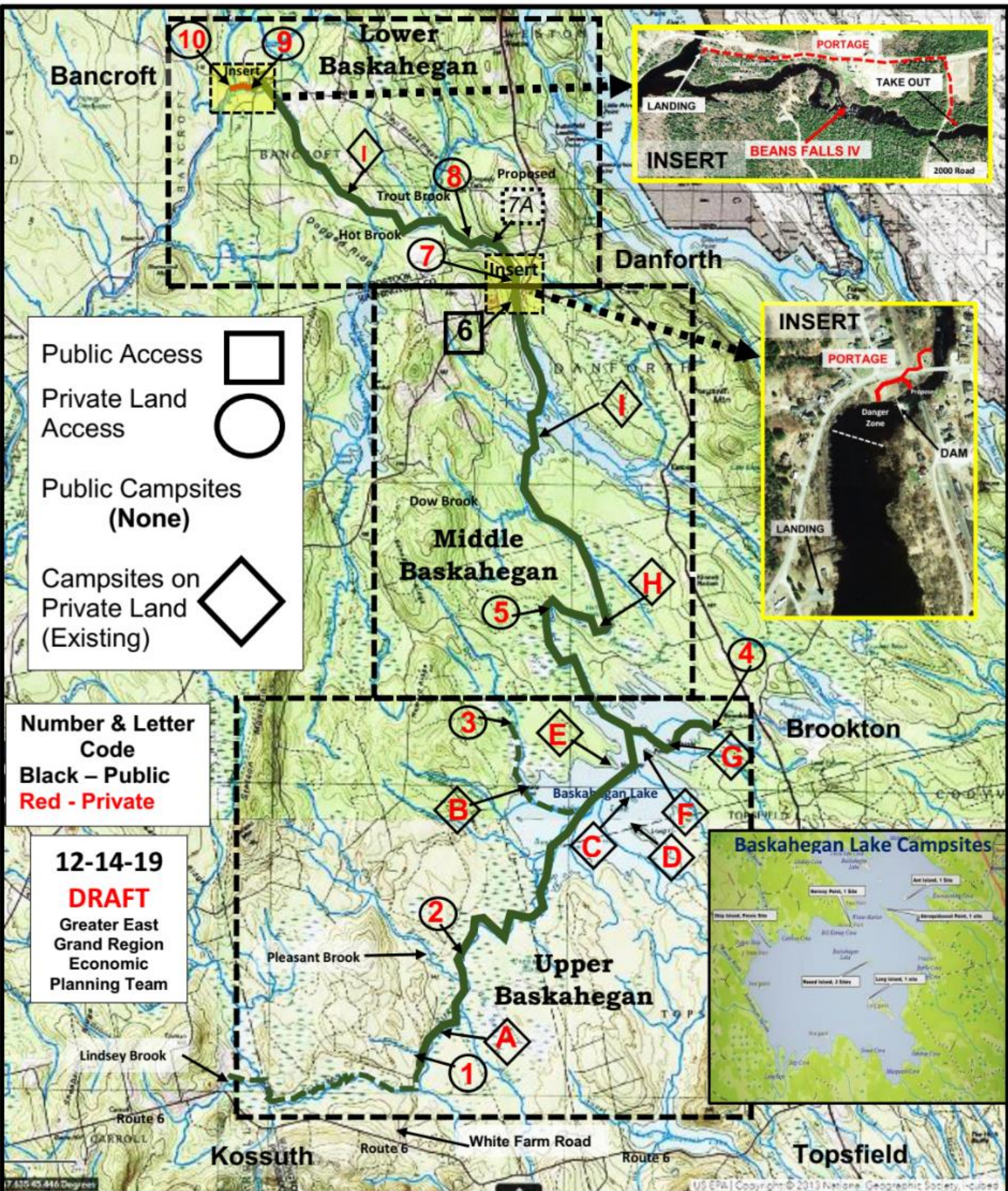
DRAFT - DECEMBER 12, 2019- Revised 12-14-19							
Mattawamkeag River Existing & Potential Campsites							
Segment	Map Campsite Letter	River Mileage	Location	Site	Status - Type	Owner	Remarks
THE BRANCHES							
West Branch	A	8.75	Lower Mattawamkeag Lake	Big Island	Public - Primitive	State - BPL	
	B	9.00	Lower Mattawamkeag Lake	Long Point	Public - Primitive	State - BPL	Confirm ownership of landing
	D	9.75	Outlet Lake - Trail to Bible Point	BPL Right to site campsites	BPL Easement	BPL & Stead Timberlands	Easement grants rights to BPL
	D	11.00	Bible Point	Bible Point Historic Site	Public	State - BPL	Confirm if camping is allowed
	D1	12.90	West Shore - Old Bridge Site	Old Bridge Site	Private - Proposed	P&C Clients	East shore potential for hand carry
	D2	16.25	West Shore - Old Bridge Site	Old Bridge Site - Accessible	Private - Proposed	P&C Clients	East shore - hand carry site
East Branch	Mile 2 to 4		Need to confirm if existing and/or new campsite locations are possible			Powers Trust	
	C	5.20	Snowmobile Bridge -East	East Shore	Private - Proposed	Lakeville Shores	
	Mile 8 to 10		Need to confirm if existing and/or new campsite locations are possible				
	E	14.95	Below Bellfield Bridge	Below Bell Ledges	Private - Proposed	Penobscot Forest LLC	
FERRY BRIDGE							
Main River	E1	4.5	North of Skagrock Confluence	Skagrock Brook	Private - Proposed	Lakeville Shores	High knowl overlooking River
	F	7.20	Route 2A Bridge - Haynesville	West of Public Road	Proposed MDIW&W	Lakeville Shores - Offered to State	East of Road - Landing
	F1	11.20	Ledge Falls - East Shore	Former BSA Campsite	Private - Proposed	Davis Forest Products	Part of a proposed subdivision
	G	15.20	Confluence with Baskahegan	Located on Baskahegan	Private - Proposed	Baskahegan Company	Part of proposed heritage site project
REED - DREW LOWLANDS							
Main River	G1	3.50	Above Bancroft Village	Island above Smith Brook	Private - Proposed	Baskahegan Company	Proposed by Kyle
	H	6.75	TCF Parcel - North of former F&G	Field off Wytopitlock Rd	Private - Eased	TCF - Reed Forest	Proposed for BPL Project
	I	12.50	West shore - above Meadow Bk	High land comes to river	Public - Proposed	MDIF&W MWM Area	Water access only

DRAFT – 10-15-19 – Revised 11-8-19

CONCEPT PLAN #3 - CONFLUENCE OF THE BASKAHEGAN MATTAWAMKEAG RIVERS HERITAGE SITE



BASKAHEGAN RIVER WATER TRAIL MAP DEPICTION



DRAFT - DECEMBER 18, 2019

Baskahegan River Access, Campsite and Mileage Chart

<u>Segment</u>	<u>Section</u>	<u>From</u>	<u>To</u>	<u>Mileage</u>	<u>Remarks</u>
<u>Upper Baskahegan</u>					
<u>Upper River</u>	Lindsey Brook	Hand Carry off Route 6	White Farm Road Bridge	5.00	Difficult passage - alders, beaver dams,etc
	Upper River	White Farm Road Bridge	Upper River Put - In (1)	0.55	Avoids rocks and low water below bridge
	Upper River	Upper River Put - In (1)	Upper River Campsite (A)	0.70	Campsite - River Right
	Upper River	Upper River Campsite (A)	Alder Brook (East)	1.80	
	Upper River	Alder Brook	Pleasant Brook (West)	0.85	
	Upper River	Pleasant Brook (West)	Pleasant Brook Access #2	0.50	
	Upper River	Pleasant Brook	Black Cat Rips	1.90	
	Upper River	Black Cat Rips	South Inlet at Lake	2.30	
	Upper River Total			8.05	From Upper River Put-In (1)
	Baskahegan Lake	South Inlet at Lake	Intersect Dead Brook Trail	1.50	Dead Brook Trail: 2.3 Miles
	Baskahegan Lake	Intersect Dead Brook Trail	Norway Point (Campsite E)	1.30	(See Baskahegan Lake Campsites B - G)
	Baskahegan Lake	Norway Point	Intersect Brookton Landing Trail	0.75	(See Baskahegan Lake Campsites B - G)
	Baskahegan Lake	Intersect Brookton Landing Trail	Outlet (Old Dam Site)	<u>1.20</u>	
	Baskahegan Lake Total			4.75	
	Total			12.80	
<u>Middle Baskahegan</u>					
<u>Middle River</u>	Baskahegan Lake	Brookton Landing	Outlet (Old Dam Site)	3.15	Included as if put-in at the Landing
	Webber Deadwater	Outlet (Old Dam Site)	Chucks Road Bridge (Access #5)	5.20	Former Site of Webber Homestead
	Middle River	Chucks Road Bridge	Anvil Meadows Campsite (H)	0.70	
	Middle River	Anvil Meadows Campsite	Hells Rapids	1.15	
	Middle River	Hells Rapids	Doe Brook	3.45	
	Middle River	Doe Brook	Crooked Brook Flowage (CBF)	1.65	
	Crooked Brook Flow	Head of the Meadows (CBF)	The Narrows Campsite (I)	0.40	The Narrows Campsite - River Right (Flow)
	Crooked Brook Flow	The Narrows Campsite (I)	The Point	0.80	Sandy point river left
	Crooked Brook Flow	The Point	Public Landing Danforth	2.55	
	Crooked Brook Flow	Public Landing Danforth	Dam Portage Take Out	<u>0.25</u>	Caution - Dam danger zone -floats & rope
	Total			16.2	
<u>Lower Baskahegan</u>					
<u>Lower River</u>	Lower River	Route 169 Bridge Put In	Proposed Public Access #7	0.65	Future Danforth Lower River access site
	Lower River	Proposed Public Access #7	Cleaves Landing - Old Indian Portage	0.60	Beginning of old portage to East Grand Lk
	Lower River	Cleaves Landing	Faulkner Put In - Access site #8	0.25	
	Lower River	Faulkner Put In - Access site #8	Trout Brook Inlet	1.00	
	Lower River	Trout Brook Inlet	Hot Brook Inlet	1.90	
	Lower River	Hot Brook Inlet	Lower Baskahegan Campsite (I)	0.60	Campsite - River Right
	Lower River	Lower Baskahegan Campsite (I)	Old Boom Logs - Head of Island	1.25	
	Lower River	Old Boom Logs - Head of Island	Take Out - 2000 Rd Bridge #9	<u>2.60</u>	River right - upstream from bridge
	Grand Total			8.85	
	Total			37.80	
	Portage around Beans Falls	Confluence with Mattawamkeag River		0.65	Future Historic Site & Hand Carry Launch

St. Croix River

**Greater East
Grand Region**



DRAFT DEPICTION - ST. CROIX RIVER WATER TRAILS

Draft Date: 12-20-19
Greater East Grand Region
Economic Planning Team

Monument Stream Water Trail (9.0 Miles+/-)

BPL Proposed Hand Carry

Upper St. Croix River Chiputneticook Lakes Water Trail

	Miles
East Grand Lk.(Orient Customs to Forest Dam)	14.0
Forest City Dam to Spednic Lake (Mud Lake and Falls)	4.0
Spednic Lk. (Booming Ground to Vanceboro)	21.5
Vanceboro to Loon Bay (St. Croix River)	22.0

Campsites in Canada

Campsites in Maine

Public Landing

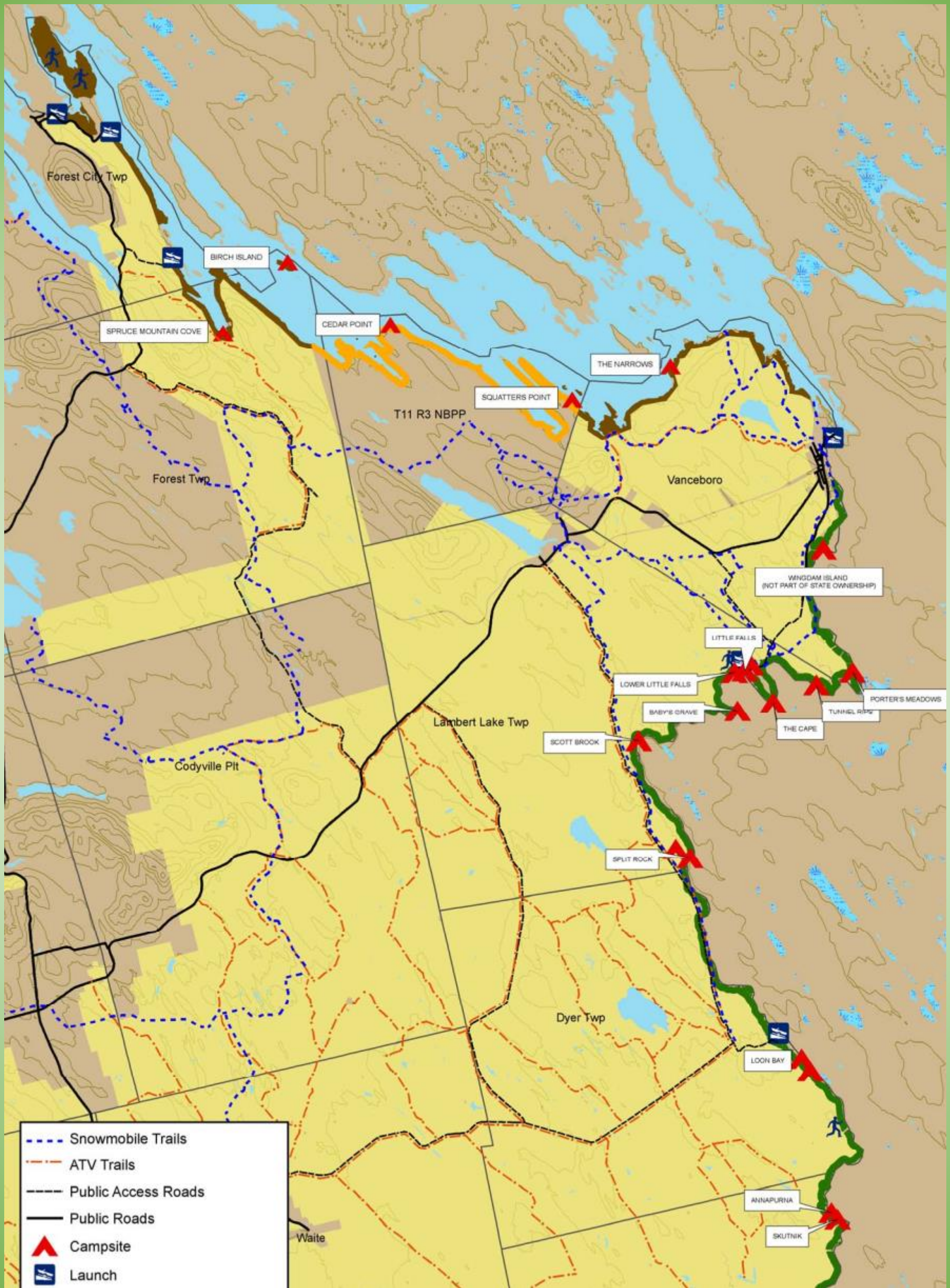
Proposed Water Access

Proposed Campsite

GREATER EAST
GRAND REGION

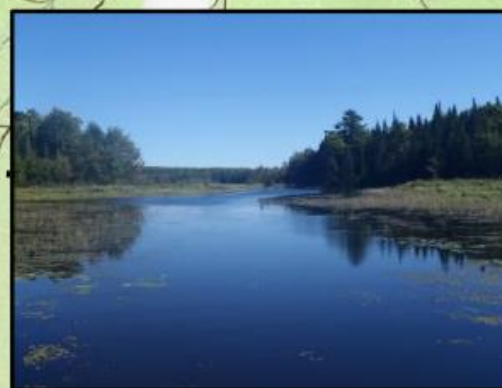
One Country Camping means you will need to stay on the shore of the country which you entered the river. **You** are also required to report to Canada and US Customs before and after your trip.





Monument Stream International Birding Trail

*DRAFT FOR
DISCUSSION ONLY*



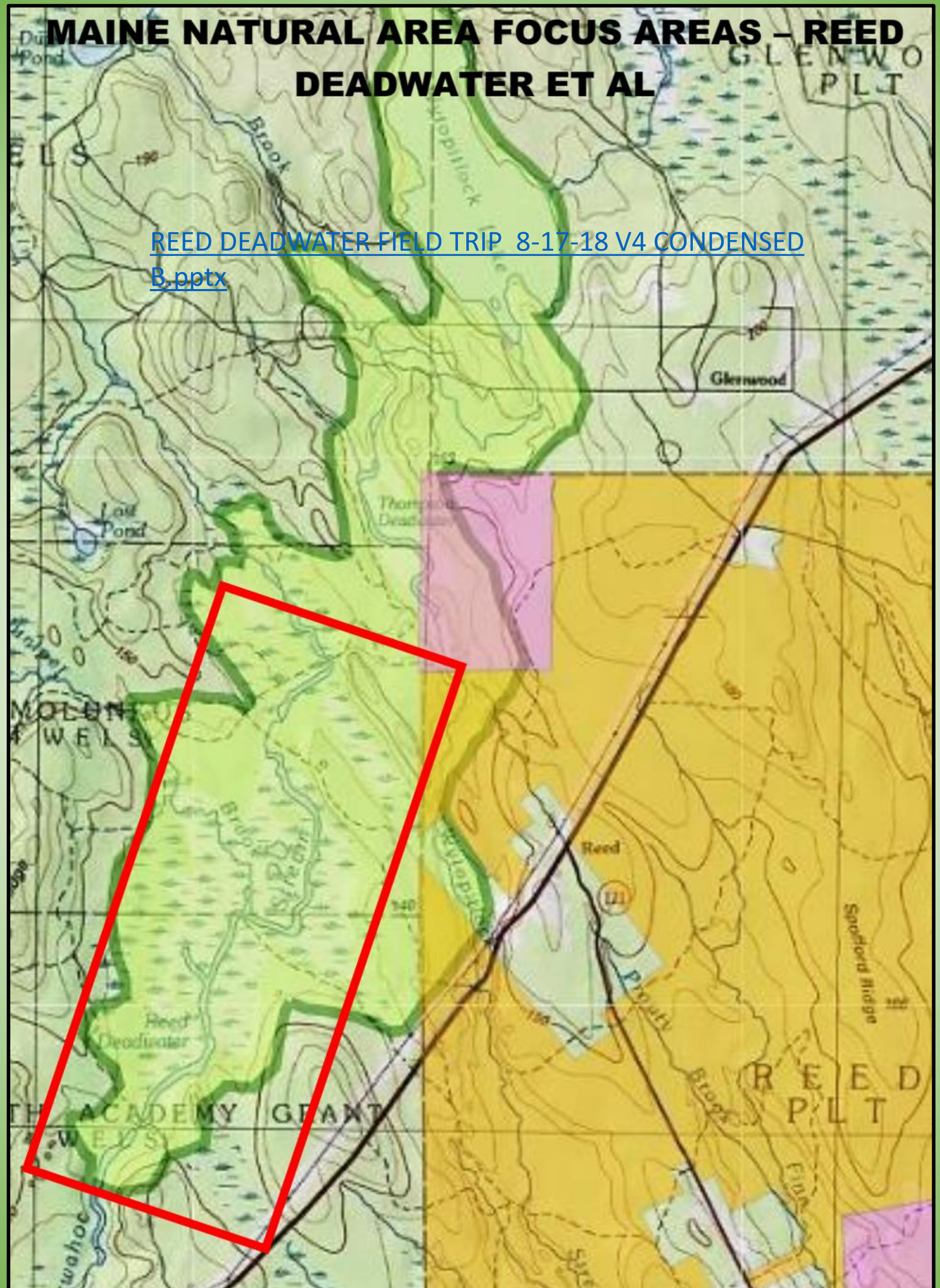
[A Canoe Trip Up Monument Brook.pptx](#)

Head of Narrows Put-In

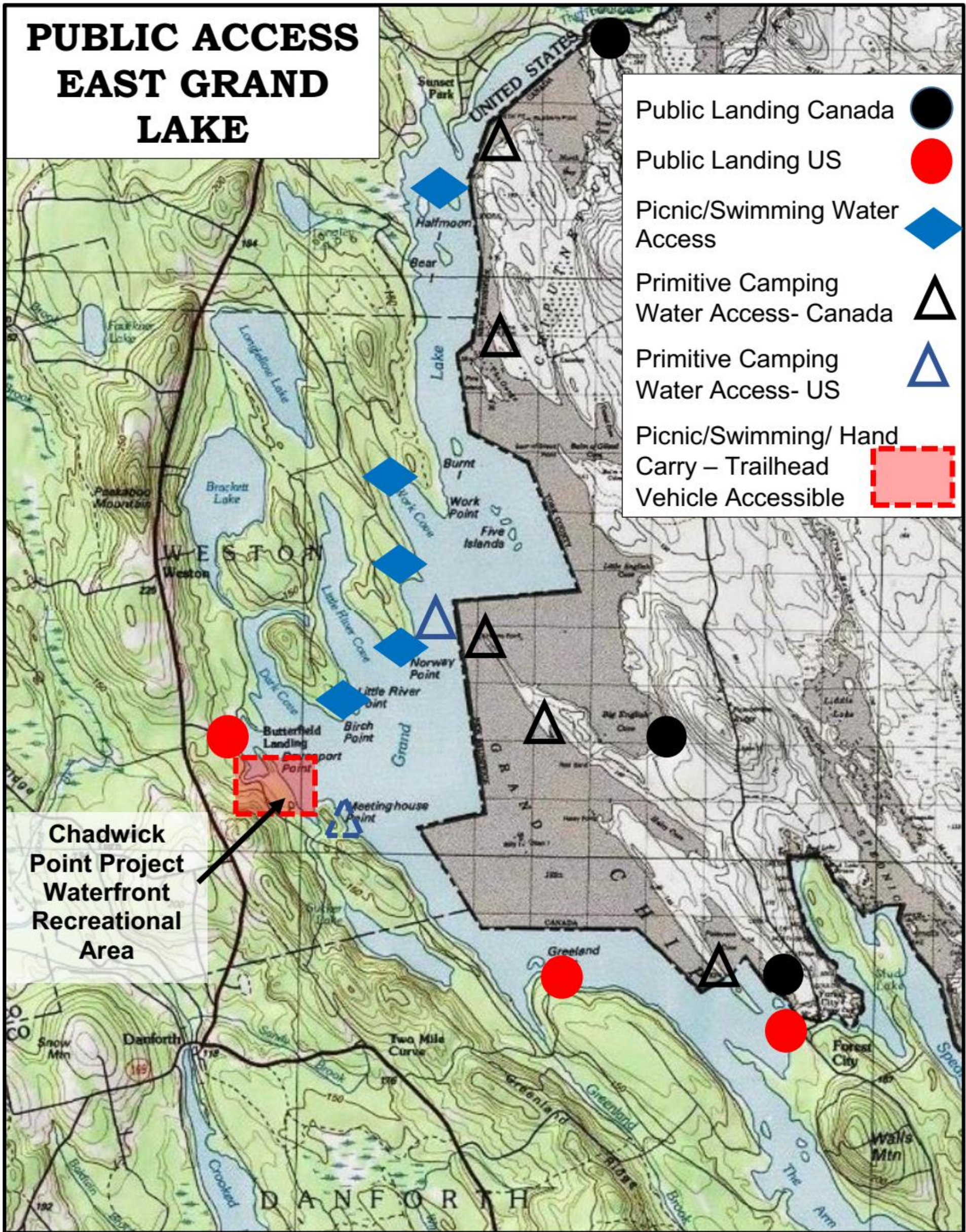
MONUMENT STREAM BIRDING TRAIL HEADWATERS ST. CROIX RIVER

<u>SECTION</u>	<u>MILEAGE</u>
Williams Brook (North Section)	1.5
Greenleaf-Monument	3.0
The Narrows	1.0
Lower Monument (South Section)	2.0
The Thoroughfare	<u>2.0</u>
TOTAL	9.5

Orient Customs Put-In



PUBLIC ACCESS EAST GRAND LAKE



WATER TRAILS

Planning Phase

Before you launch your project, take time to create your team, establish partnerships and get everyone on the same boat.

- Develop a vision
- Select a route (starting and end point)
- Identified trail users (motorized or non)
- Assemble a team
- Develop organizational structure and

Inventory Phase

Grab your paddle and PFD and evaluate your proposed trail route. Don't forget to take that GPS along to inventory key points along the way.

- Map the trail (quad sheets, navigational charts, GPS, etc.) and GPS points identified below
- Identify publically accessible lands and existing launches
- Identify points of interest and services
- Identify known hazards

Access Phase

It's time to talk to the landowners and develop legal access points. Work with local, state and federal agencies on improvements and funding sources.

- Target low hanging fruit first – areas where access already exists or is easiest to establish
- Determine permit or permission needs for land access (parking, camping, etc.)
- Negotiate/develop land use agreements (MOU's, site licenses, etc.) for 24/7 access

WATER TRAILS

Implementation Phase

It's time to make it happen!

- Obtain funding for needed acquisition and infrastructure projects.
- Acquire rights to lands needed for access and camping if needed. This may include fee simple acquisition, easements, or permit agreements with other entities.
- Minimize environmental impacts and utilize Leave No Trace principles

Promotion Phase

Often the most important phase of the project is letting people know about it and getting the word out.

- Develop logo/branding
- Assess need for signage (typically only at launch sites and parking areas).
- Design and launch website
- Develop printed material (e.g. brochures, guidebooks, postcards, etc.)

Operation and Maintenance Phase

A long-term commitment to keep the trail open and safe.

- Identify an organizational "owner" or coordinator
- Develop a management plan (e.g. are fires allowed, waste disposal, etc.)
- Assemble a corps of volunteers

NATIONAL PARK SERVICE

Community Assistance

Have an idea for a trail, river, or park in your community? The National Park Service can help!

The National Park Service Rivers, Trails, and Conservation Assistance program supports community-led natural resource conservation and outdoor recreation [projects across the nation](#).

Our national network of conservation and recreation planning professionals partners with community groups, nonprofits, tribes, and state and local governments to design trails and parks, conserve and improve access to rivers, protect special places, and create recreation opportunities.

[Contact us](#). Together, we help you get your conservation and outdoor recreation ideas on the ground.



Where We Work ›

Explore community assistance projects across the country.



Contact Us ›

Contact us to discuss how we can help you with conservation and outdoor recreation in your community.



Apply Today!

Get Assistance ›

Check out our application and contact a program manager near you to learn more.

BUREAU OF PUBLIC LANDS

Bureau of Parks and Lands

Land and Water Conservation Fund

The Land and Water Conservation Fund Act of 1964 (LWCF) was established to assist federal, state and local governments in the acquisition and/or development of public outdoor recreation facilities. Administered at the federal level by the National Park Service and at the state level by the Bureau of Parks and Lands in the Maine Department of Agriculture, Conservation and Forestry, LWCF grants can provide up to 50% of the allowable costs for approved acquisition or development projects for public outdoor recreation.

The application period for 2020 grant awards will be open by March 1, 2019. At that time updated application and support documents will be posted below. The maximum grant award for this round will be \$300,000.

When the new application is posted, grant documents will be listed below to provide specific information about the Maine LWCF grant applications process. Eligible agencies are encouraged to contact the Grants and Community Recreation program at the address below for assistance and guidance in the application process. Note that this program requires a pre-approval site inspection to assure project eligibility. If you are considering an application in this grant round please request a site visit at your earliest convenience by following the link below.

Contact Information

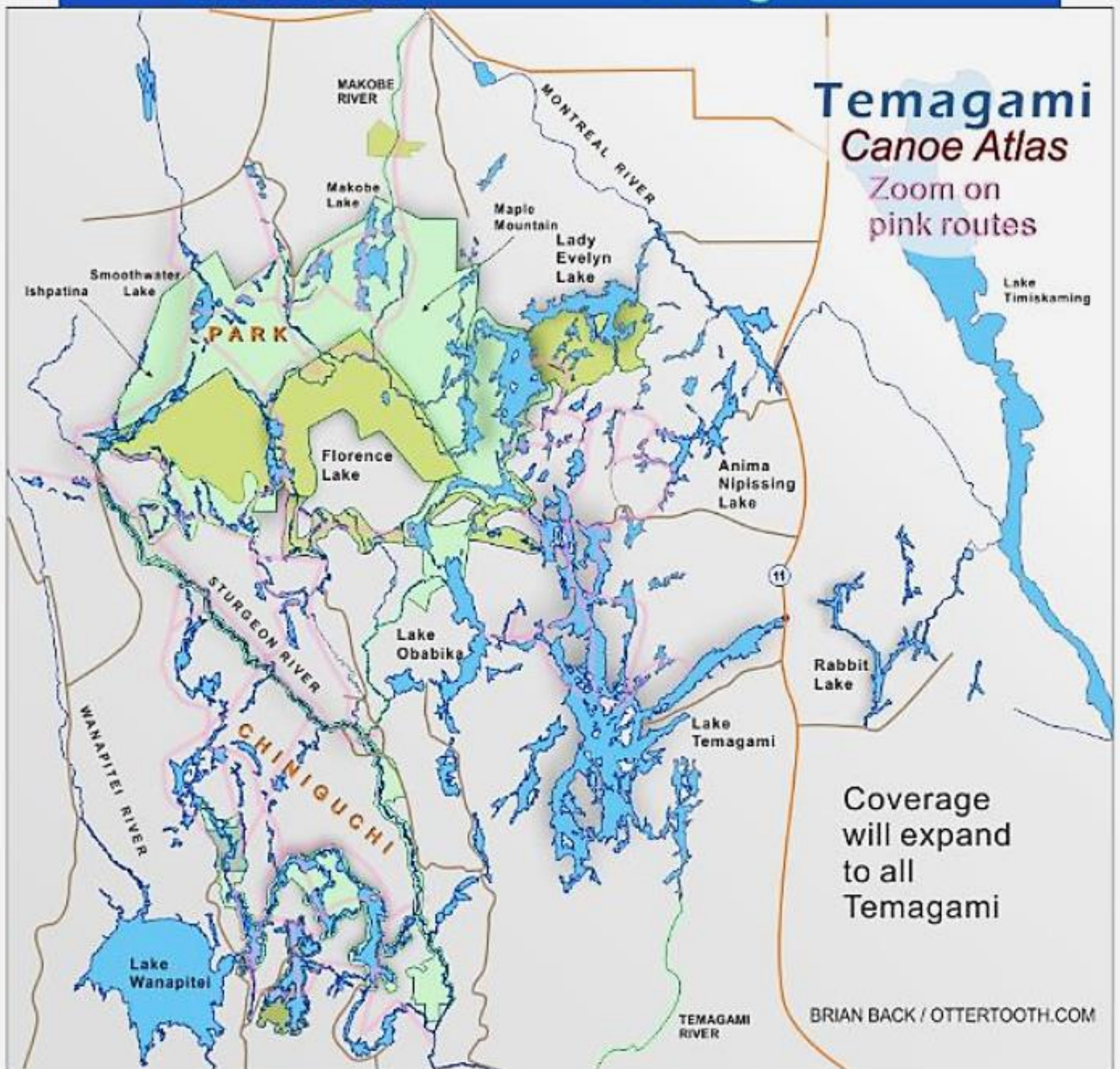
Grants and Community Recreation
Bureau of Parks and Lands
124 State House Station
Augusta, Maine 04333
(207) 624-6090
Doug Beck, Outdoor Recreation Supervisor
E-mail address: Doug.Beck@maine.gov

Required Signs

Receive Land & Water Conservation Fund News!

Enter your email below to sign-up:

Go

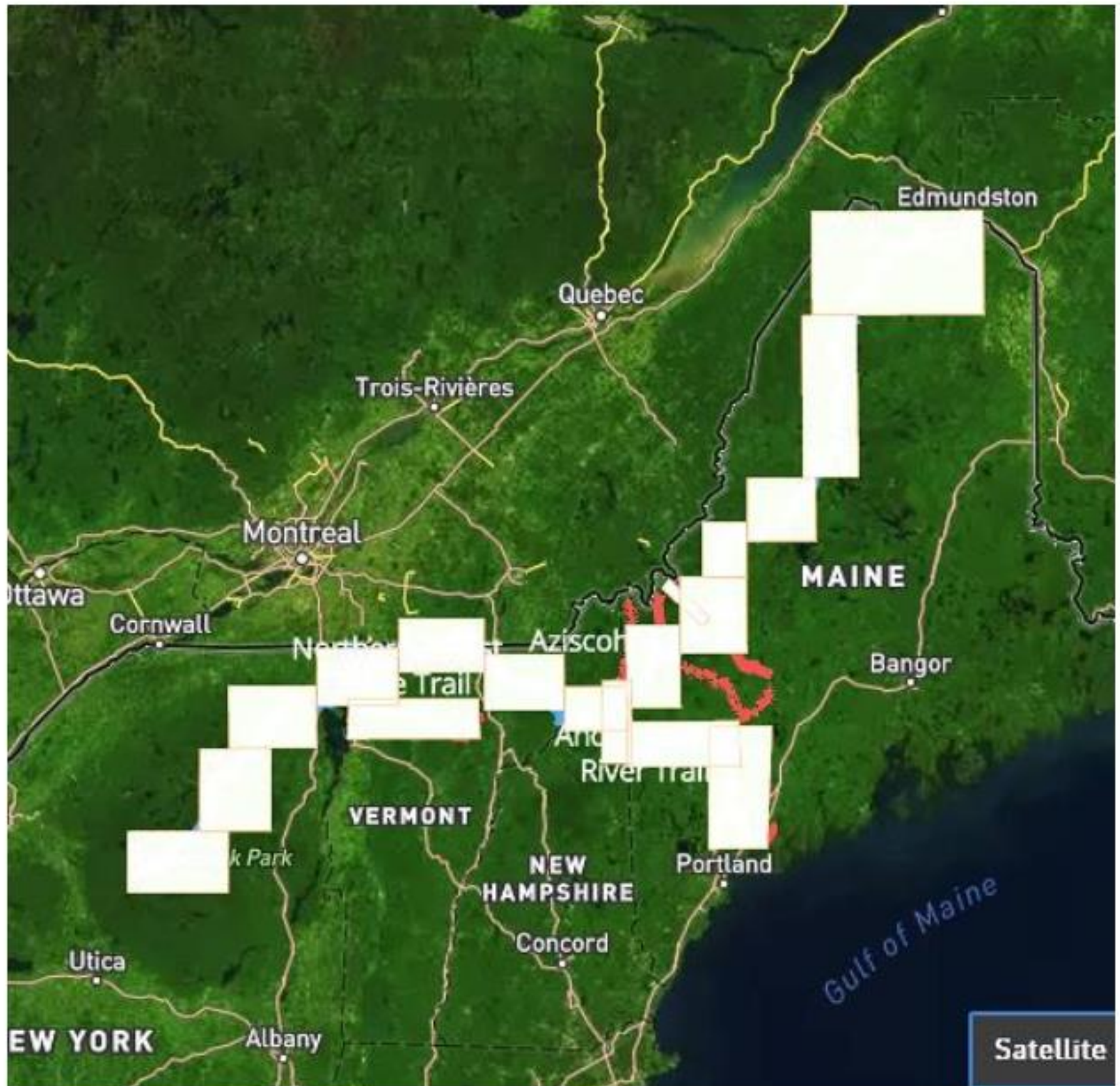


Nastawgan is a word still in common usage amongst the older, native-speaking Indians of Northeastern Ontario. *Nastawgan* are the ways or the routes for travel through the land of the Temagami district in Northeastern Ontario, just south of the height-of-land.

<http://www.ottertooth.com/Temagami/History/nastawgan.htm>

www.northernforestcanoetrail.org

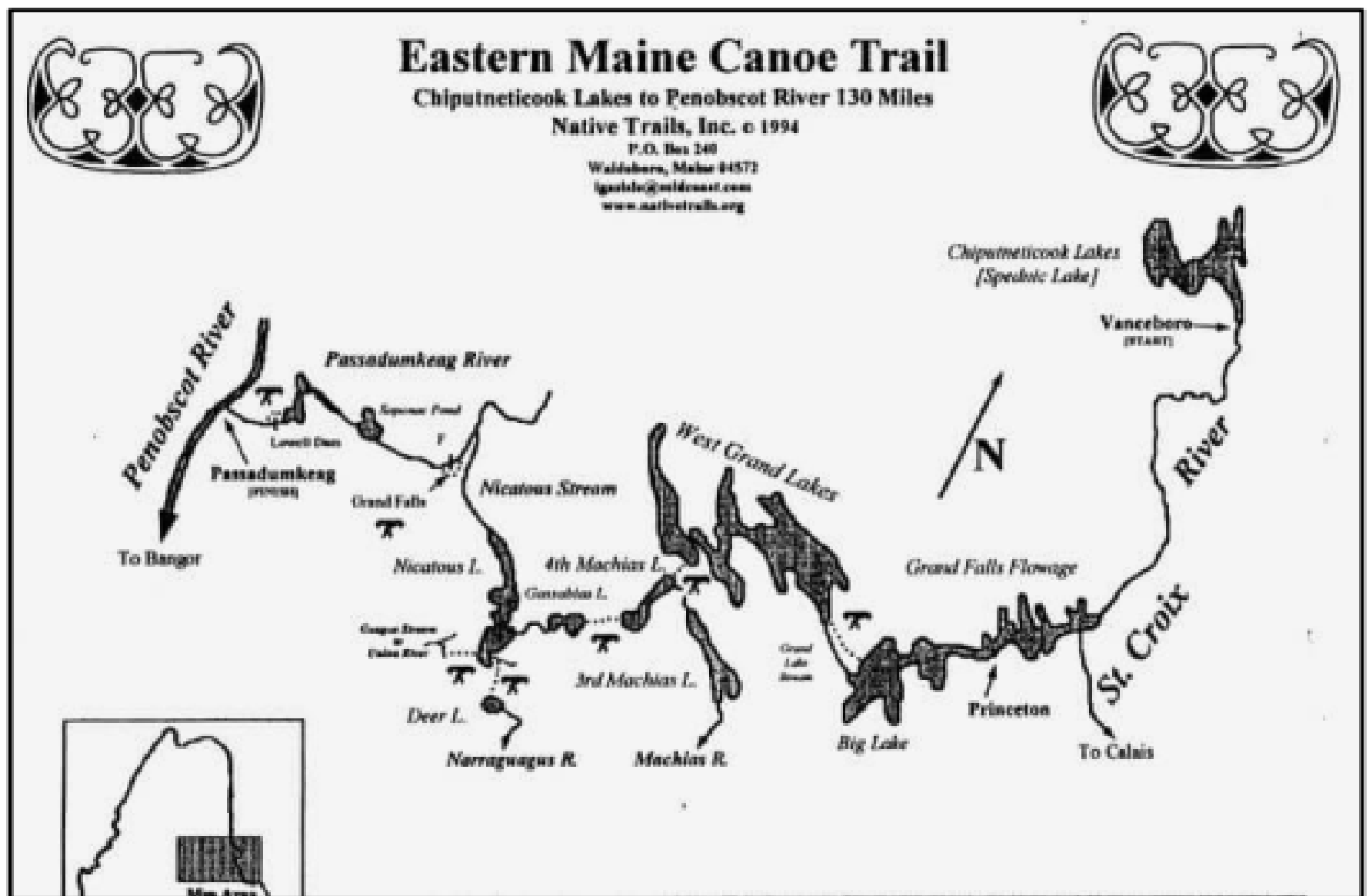
Northern Forest Canoe Trail is a 740-mile trail that follows historic waterways from Old Forge, New York, to Fort Kent, Maine.



<https://www.northernforestcanoetrail.org/about/our-mission/>

EASTERN MAINE CANOE TRAIL

In the 20th century, paved highways and logging roads eliminated the need for these historic water trails. But many still exist, largely unchanged. Now, these trails are being rediscovered. One route – the one we are traveling – connects the St. Croix River on the New Brunswick border with the Penobscot River north of Bangor. This 130-mile route has been dubbed the Eastern Maine Canoe Trail.



<https://www.northernforestcanoetrail.org/exploring-the-eastern-maine-canoe-trail/eastern-maine-canoe-trail/>

DRAFT FOR DISCUSSION PURPOSES ONLY

GREATER EAST GRAND REGION – RECREATIONAL ACCESS TO PUBLIC WATER

