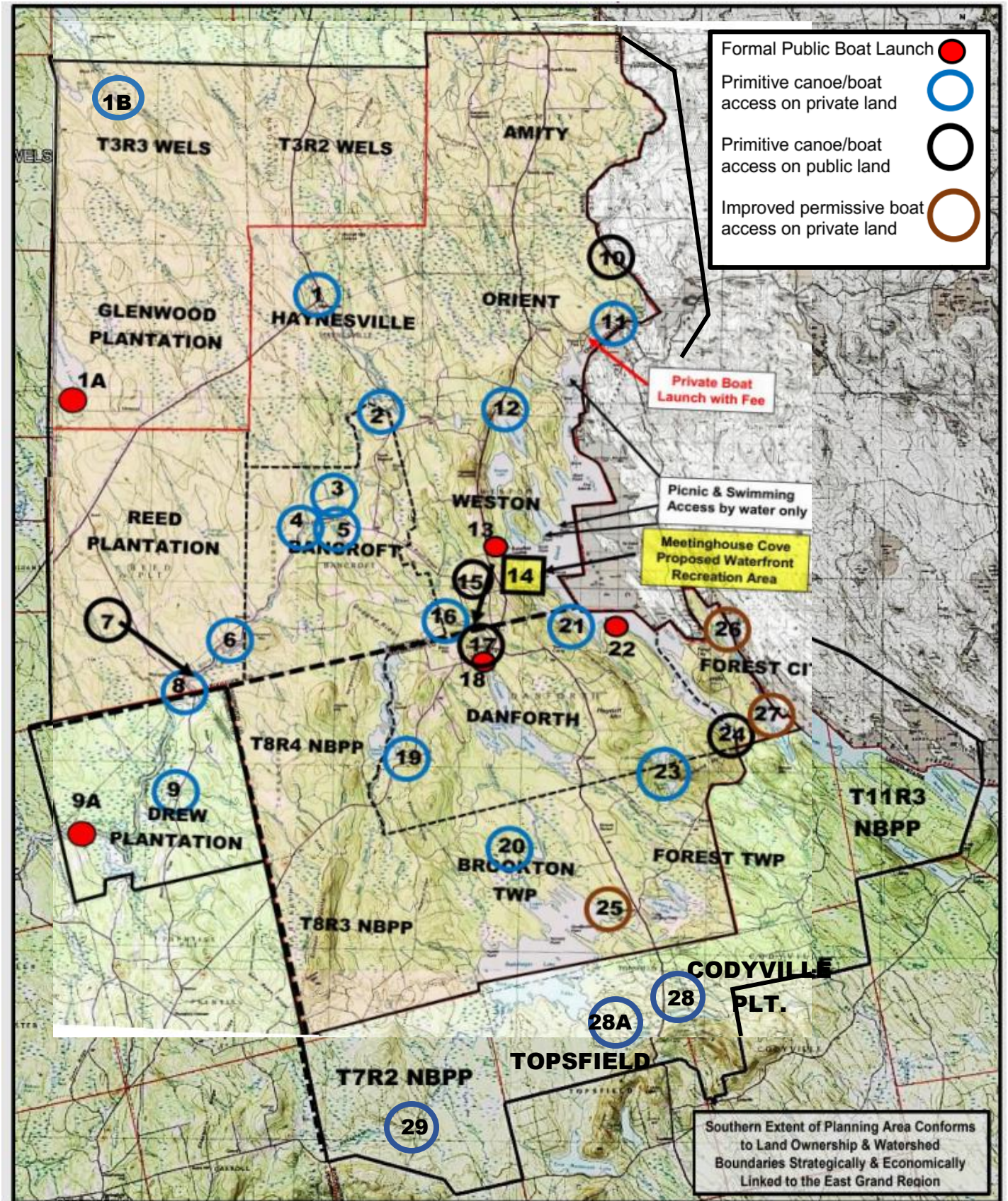


DRAFT FOR DISCUSSION PURPOSES ONLY
GREATER EAST GRAND REGION – RECREATIONAL
ACCESS TO PUBLIC WATER (Maine)



GREATER EAST GRAND REGION

MAPPED ACCESS SITES TO PUBLIC WATER

1. Haynesville – Route 2A Bridge – Mattawamkeag River
- 1A. Glenwood Plantation – Wytovitlock Lake
- 1B. T3R3 WELS – Mud Ponds
2. Haynesville – Ferry Bridge – Mattawamkeag River
3. Bancroft – End South Bancroft Road – Mattawamkeag River
4. Bancroft – Wytovitlock Road Bridge – Mattawamkeag River
5. Bancroft – 2000 Road Bridge – Baskahegan Stream
6. Reed Plantation – Opposite Pit Road – Mattawamkeag River
7. Reed Plantation – Town owned land – Mattawamkeag River
8. Drew Plantation – Route 171 Drew Bridge - Mattawamkeag River
9. Drew Plantation – Meadow Brook – Route 171– Mattawamkeag River
- 9A. Drew Plantation – Page Farm – Mattawamkeag River WMA
10. Orient – North Road – Carry-In access to Monument Stream
11. Orient – Boundary Road - US side bridge downstream – Thoroughfare
12. Weston – US Route 1 – Deering Lake
13. Weston – Public boat launch – Butterfield Landing – East Grand Lake
14. Weston – Proposed public recreation area – Meetinghouse Cover E Grand
15. Weston – Municipal waterfront land – Baskahegan Stream
16. Weston – Faulkner Family land – Cleaves Landing area – Baskahegan
17. Danforth – Route 169 Bridge below the Dam – Baskahegan Stream
18. Danforth- Public boat landing above the dam– Crooked Brook Flowage
19. Danforth – Upper Hot Brook – off Route 169
20. Brookton – Chuck’s Road Bridge – BCO – Baskahegan Stream
21. Danforth – Sucker Lake – Snow Family Trust – East Grand Highlands
22. Danforth – Public Boat Landing – Greenland Cove East Grand Lake
23. Forest Twp – Little Tomah Lake – Remote Pond
Danforth – Little & Big Greenland Ponds - Remote
24. Danforth – The Arm – East Grand Lake
25. Brookton Twp - Baskahegan Lake Landing
26. Spednic Lake – Upper Landing
27. Spednic Lake – Castle Road Landing
28. Little Tomah Lake
- 28A. Pickerel Pond – Trail from Cold Springs Hill
29. Baskahegan Stream Canoe Trip – Put –In (White Farm Road)