



FOREST
SOCIETY
of MAINE

April 28, 2020

115 Franklin Street, 3rd Floor
Bangor, ME 04401

207-945-9200 tel
207-945-9229 fax

www.fsmaine.org
info@fsmaine.org

STETSON MOUNTAIN FUND GRANT APPLICATION

A. Summary Sheet

Organization Name:	Citizens Organization for Rural Education
Address:	P.O. Box 252 Danforth, ME 04424
Contact (Name and Title):	Elbridge Cleaves, President
Phone:	207-557-9474
E-mail:	egcleaves@pwless.net
IRS Employer ID Number (EIN):	81 – 1557669

Mission: To build a partnership between East Grand School and the two-district communities of Danforth and Weston in order to make rural education relevant, attractive to students and financially sustainable through “learning in the out-of-doors.”

Brief history of organization: Citizens Organization for Rural Education (CORE) began in 2014 as a grass roots organization working with East Grand School and the two-district communities of Danforth and Weston. CORE is a small organization, no paid staff, and the work has been primarily one of information, coordination, fund raising and support. Joint accomplishments with the school include strategic planning, construction of an outdoor classroom on donated land, a garden center, curriculum development, teacher training, off-site middle school outings, the Harlow Trail (a school-community service project), and assistance in developing the natural resources pathway options for aspiring students.

CORE also works within the community. The organization obtained funding and contracted with Sunrise County Economic Council to conduct a local economic impact analysis in the event part or all of the school was faced with closure. Findings show a substantial economic hit for the area if local education fails in Danforth and Weston. The Harlow Cross-Country Ski and Snowshoe Trail (mentioned above) marked a multi-year effort by CORE to develop a community service, recreational and educational trail; a partnership involving the students at East Grand School, the Town of Danforth and the Baskahegan Company. Most recently CORE helped raise \$30,000 for a regional economic planning effort. CORE serves as fiscal agent and co-applicant with the Greater East Grand Chamber of Commerce for grants thru the Maine Community Foundation and the Washington County TIF.

Project name: “Bashahegan River Water Trail Map & Brochure”

Two sentence description of project:

To design, assemble and print up to 500 copies of a color map and brochure for the Baskahegan River Water Trail; 34 miles of remote, gentle flowing and flat water offering paddling adventures of one to four days, excellent opportunities to see wildlife, and numerous options for put-ins, take-outs and primitive camping. This map and brochure will provide the location of trail infrastructure, a brief history of the River, summaries of each segment, links to additional digital resources, a call for stewardship of the resource, and an acknowledgement of the efforts of many people and organizations including the Baskahegan Company, the East Grand Outdoor Education Students, Dave Conley of Canoe the Wild and the Stetson Mountain Fund of the Forest Society of Maine.

See Exhibit #1 – The Baskahegan River Water Trail & Mileage Chart

Total project cost (Cash): \$500.00

Amount requested from Stetson Mountain Fund: \$500.00

In Kind Contribution: \$500.00 **Total Project =** \$1000.00

I hereby certify that the above project is within the Baskahegan Stream watershed.



(Signature) _____,

(Title) _____ President - Date: April 28, 2020

B. Project Narrative

Please answer each of the questions listed below using no more than two pages with one inch margins and a minimum of 11-point font.

1. Describe your project and its purpose.

The importance of recreational trails and associated infrastructure has been a major focus of the recent economic planning effort in the Greater East Grand Region of Eastern Maine. Planning efforts have included identification, preliminary mapping and prioritization of nearly 200 +/-miles of water trails. (See Overview Map Exhibit # 2 Attached) Because of the generous public campsite policy of the Baskahegan Company and the associated infrastructure investments, the trails committee including a representative from the Baskahegan Company determined to elevate the River to a water trail status.

The Baskahegan River is special if no other reason than nearly all of the lands thru which it flows is owned and managed by the Baskahegan Company. (See Exhibit #3 – Baskahegan Lands Depiction) For the East Grand Region, it is doubly special because of the past and current efforts to improve the River's recreational experience. Those people and organizations include: Roger Milliken Jr. and the Staff of the Baskahegan Company, Dave Conley of Canoe the Wild, the East Grand School Outdoor Education Students, the East Grand Adventure Race, the Stetson Mtn Fund and Staff of the Forest Society of Maine, Members of the Advisory Committee, and the Trails Committee and Project Leader of the Greater East Grand Region Economic Planning Group. It seems only fitting to celebrate the collective accomplishments in a Baskahegan River Map & Brochure.

A formal brochure for the River will also complement the promotional work of Dave Conley and Canoe the Wild website at: <https://canoethewild.com/baskahegan-stream-canoe-trips/> as well as the East Grand Outdoor Education Student campsite restoration and development work also found recorded in pictures at <https://canoemaine.wordpress.com/2013/01/26/baskahegan-lake-project-report-2/> and <https://canoemaine.wordpress.com/2013/09/08/baskahegan-stream-campsite-project-summer-2013/>. Most recently, Dave has worked with Maine Trail Finder to place the Baskahegan River on the Maine Trail Finder website at: <https://www.mainetrailfinder.com/trails/trail/baskahegan-stream-race-course-and-paddling-route> (See Maine Trail Finder Exhibit #4 Narrative & Map attached)

Plans are to distribute hard copies of the brochure throughout the region including at sporting camps, Lodges and campgrounds. Links in the brochure will reference Canoe the Wild, Maine Trail Finder and a web portal for downloading a PDF version. Estimates of printing cost from Lincoln County Publishing are 500 copies of a trifold, 4-color brochure at approximately \$400.00. Volunteers will be used to prepare text about the history of the River and people, descriptions of the major natural features, recognition of all who helped make it happen, rules of the trail, safety concerns, stewardship responsibility, and web references to digital materials, potential guides and outfitters. Dave Conley has authorized access to Baskahegan material on Canoe the Wild website. If additional mapping is warranted, Baskahegan Company has offered assistance with their GIS mapping system.

2. What are the outcomes you hope to achieve?

Much of the initiative for this project lies with the on-going economic planning effort for the half million acre Greater East Grand Region. Outcomes include promoting the area's natural resources including existing and developing cultural, historic and recreational assets in support of area businesses and tourism. This timely promotion of the Baskahegan River Water Trail will help instill a sense of accomplishment and momentum in the quest toward long-term economic growth and development.

3. What will be the lasting impact on your organization and/or the Baskahegan Stream watershed?

The Baskahegan River Water Trail is an example of the type of project that instills a sense of pride in "place", especially in the minds of area youth. Sustaining a rural way of life for the East Grand area must include making home a place to love, a place to find gainful employment, a place to recreate, a place for community and civic service and a place to come back to later in life. The Baskahegan River Water Trail as a pilot water trail project is an important piece in the overall economic plan for the Region. The trail will add a greater diversity of outdoor recreation in Region, a potential pathway to developing nature tourism, and help support existing and new businesses such as campgrounds, guides and outdoor equipment rentals.

4) How will results be measured?

In the short-term one way to measure the viability of the project is to encourage feedback from users on social media. Another tool could be placement of a guest register/comment box at various places on the trail or at one of the lake campsites such as Round Island. Longer-term benefits will depend upon the success of how well the recommendations in the forthcoming regional economic plan can be implemented. As was stated in the Harlow Trail

project description, there is a positive accumulative effect of the successful development of recreational and educational projects – many of which have been funding in whole or in part by the Stetson Mountain Fund at the Forest Society of Maine.

5) How will these accomplishments be maintained?

Citizens Organization for Rural Education (CORE) in conjunction with the Greater East Grand Economic Planning Team will convene an oversight committee to be charged with establishing a solution for administering and maintaining recreational infrastructure in the Greater East Grand Region. So far discussions have included a volunteer model for each River Trail and/or a utilizing/contracting a broader oversight group in the vein of North Maine Woods. The Committee will consist of local community members, area youth, the Baskahegan Company and other volunteers in area education and outdoor recreation.

C. Project Budget

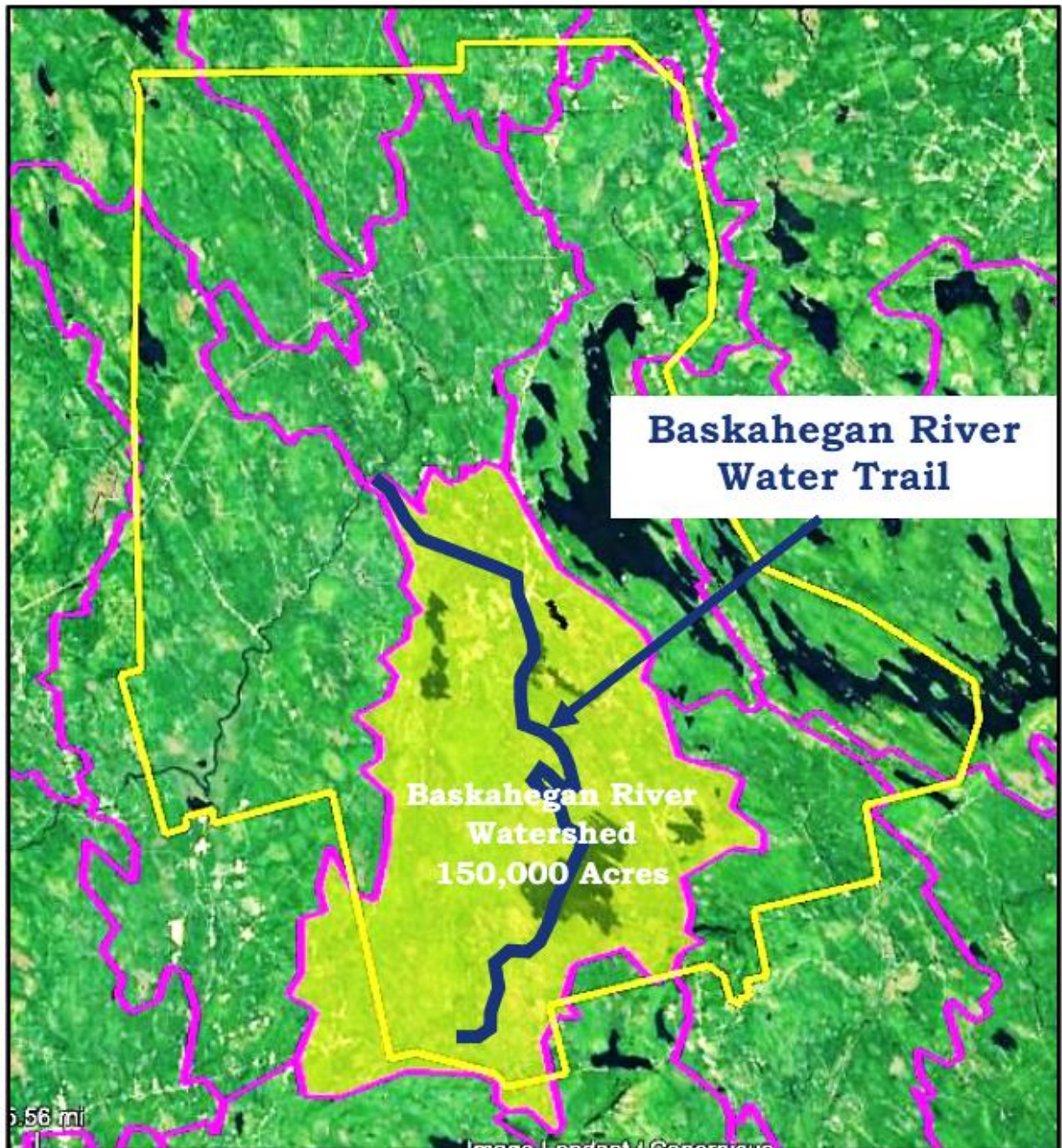
**BASKAHEGAN RIVER WATER TRAIL BROCHURE
PRELIMINARY BUDGET - 2020**

<u>REVENUE</u>		Cash Portion of Proj (ind Contribution)		
<u>Component</u>	<u>Source</u>	<u>2020</u>	<u>2020</u>	<u>Grand Total</u>
Grant - 2020	Stetson Mtn	\$500.00		
	<u>Subtotal</u>	\$500.00		
<u>In-Kind</u>				
Land	Baskahegan		\$250.00	
Draft text and design	Volunteers		\$250.00	
	<u>Subtotal</u>		\$500.00	
Total		\$500.00	\$500.00	\$1,000.00
<u>EXPENSES</u>				
<u>Component</u>	<u>Item</u>			
Brochure	Design (Lincoln County)	\$100.00		
	Print (Lincoln County)	\$400.00		
	Draft text & design		\$250.00	
	Digital linkage - production		\$250.00	
	Signage			
	<u>Subtotal</u>	\$500.00	\$500.00	
Total		\$500.00	\$500.00	\$1,000.00

EGC - April 29, 2019

D. Project Location

BASKAHEGAN RIVER WATER TRAIL LOCATION MAP



BASKAHEGAN RIVER WATER TRAIL MAP DEPICTION

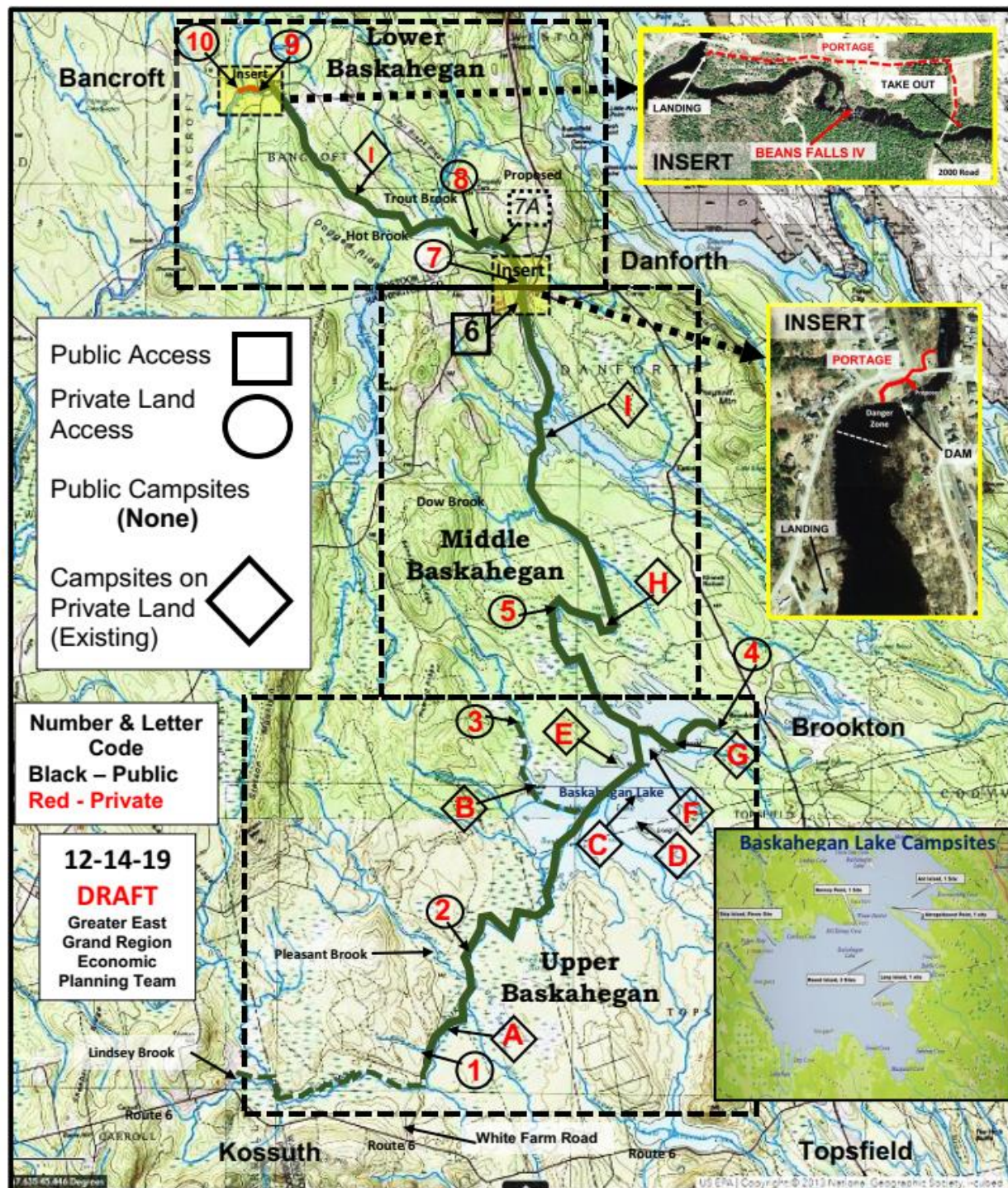


Exhibit No. 1 Continued

DRAFT - DECEMBER 18, 2019					
Baskahegan River Access, Campsite and Mileage Chart					
Segment	Section	From	To	Symbol	Mileage
<u>Upper River</u>	Lindsey Brook	Hand Carry off Route 6	White Farm Road Bridge		
	Upper River	White Farm Road Bridge	Upper River Put - In (1)	1	5.00 Difficult passage - alders, beaver dams, etc
	Upper River	Upper River Put - In (1)	Upper River Campsite (A)	A	0.55 Avoids rocks and low water below bridge
	Upper River	Upper River Campsite (A)	Alder Brook (East)		0.70 Campsite - River Right
	Upper River	Alder Brook	Pleasant Brook (West)		1.80
	Upper River	Pleasant Brook (West)	Pleasant Brook Access #2		0.85
	Upper River	Pleasant Brook	Black Cat Rips	2	0.50
	Upper River	Black Cat Rips	South Inlet at Lake		1.90
	Upper River Total				2.30
	Baskahegan Lake	South Inlet at Lake	Intersect Dead Brook Trail - Put in #3	3	8.05 From Upper River Put-in (1)
<u>Middle River</u>	Baskahegan Lake	Intersect Brookton Landing Trail	Ship Island Campsite	B	1.50 Dead Brook Trail: 2.3 Miles
	Baskahegan Lake	Intersect Brookton Landing Trail	Round Island - 3 Campsites	C	
	Baskahegan Lake	Intersect Brookton Landing Trail	Long Island Campsite	D	
	Baskahegan Lake	Intersect Brookton Landing Trail	Norway Point (Campsite E)	E	
	Baskahegan Lake	Intersect Brookton Landing Trail	Abby Campsite	F	
	Baskahegan Lake	Intersect Brookton Landing Trail	Ant Island Campsite	G	1.30 (See Baskahegan Lake Campsites B - G)
	Baskahegan Lake	Intersect Brookton Landing Trail	Intersect Brookton Landing - Access	4	
	Baskahegan Lake	Intersect Brookton Landing Trail	Outlet (Old Dam Site)		0.75 (See Baskahegan Lake Campsites B - G)
	Baskahegan Lake Total				1.20
	Total				4.75
<u>Lower River</u>	Baskahegan Lake	Brookton Landing	Outlet (Old Dam Site)		12.80
	Webber Deadwater	Outlet (Old Dam Site)	Chucks Road Bridge (Access #5)	5	3.15 Included as if put-in at the Landing
	Middle River	Chucks Road Bridge	Anvil Meadows Campsite (H)	H	5.20 Former Site of Webber Homestead
	Middle River	Anvil Meadows Campsite	Hells Rapids		0.70
	Middle River	Hells Rapids	Doe Brook		1.15
	Middle River	Doe Brook	Crooked Brook Flowage (CBF)		3.45
	Crooked Brook Flow	Head of the Meadows (CBF)	The Narrows Campsite (I)	I	1.65
	Crooked Brook Flow	The Narrows Campsite (I)	The Point		0.40 The Narrows Campsite - River Right (Flow)
	Crooked Brook Flow	The Point	Public Landing Danforth	6	0.80 Sandy point river left
	Crooked Brook Flow	Public Landing Danforth	Dam Portage Take Out		2.55
<u>Lower River</u>	Lower Baskahegan				0.25 Caution - Dam danger zone - floats & rope
	Lower River	Route 169 Bridge Put In - #7	Proposed Public Access #7A	7	16.2
	Lower River	Proposed Public Access #7A	Cleaves Landing - Old Indian Portage	7A	0.65 Future Danforth Lower River access site
	Lower River	Cleaves Landing	Faulkner Put In - Access site #8	8	0.60 Beginning of old portage to East Grand Lk
	Lower River	Faulkner Put In - Access site #8	Trout Brook Inlet		0.25
	Lower River	Trout Brook Inlet	Hot Brook Inlet		1.00
	Lower River	Hot Brook Inlet	Lower Baskahegan Campsite (IA)	IA	1.90
	Lower River	Lower Baskahegan Campsite (IA)	Old Boom Logs - Head of Island		0.60 Campsite - River Right
	Lower River	Old Boom Logs - Head of Island	Take Out - 2000 Rd Bridge #9	9	1.25
	Grand Total				2.60 River right - upstream from bridge
<u>Lower River</u>	Portage around Beans Falls		Confluence with Mattawamkeag River	10	8.85
					37.80
Future Historic Site & Hand Carry Launch					0.65

Exhibit #2

**GREATER EAST GRAND REGION – LOCATION MAP
WATER TRAILS – DRAFT 12-20-19**

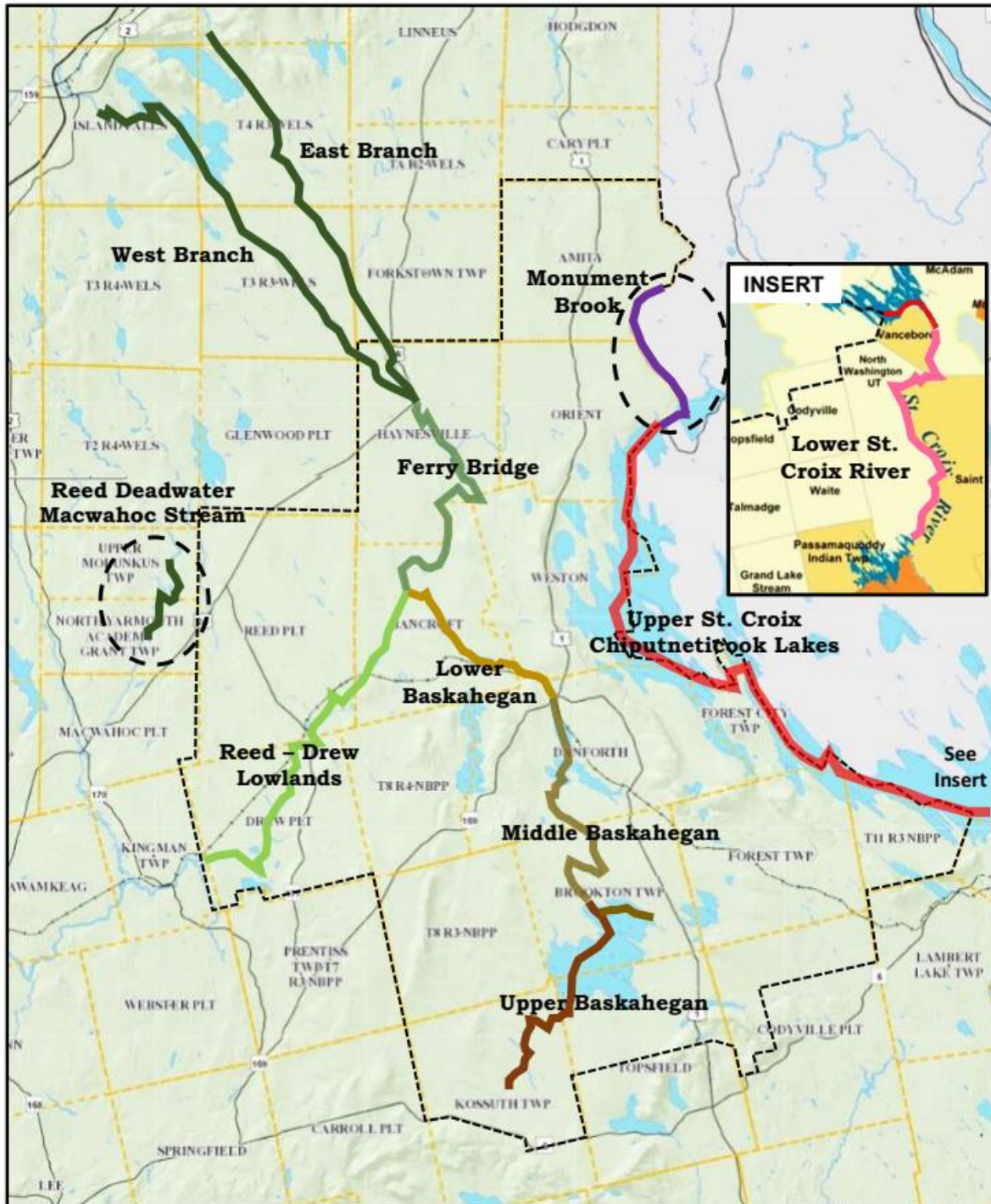


Exhibit #3

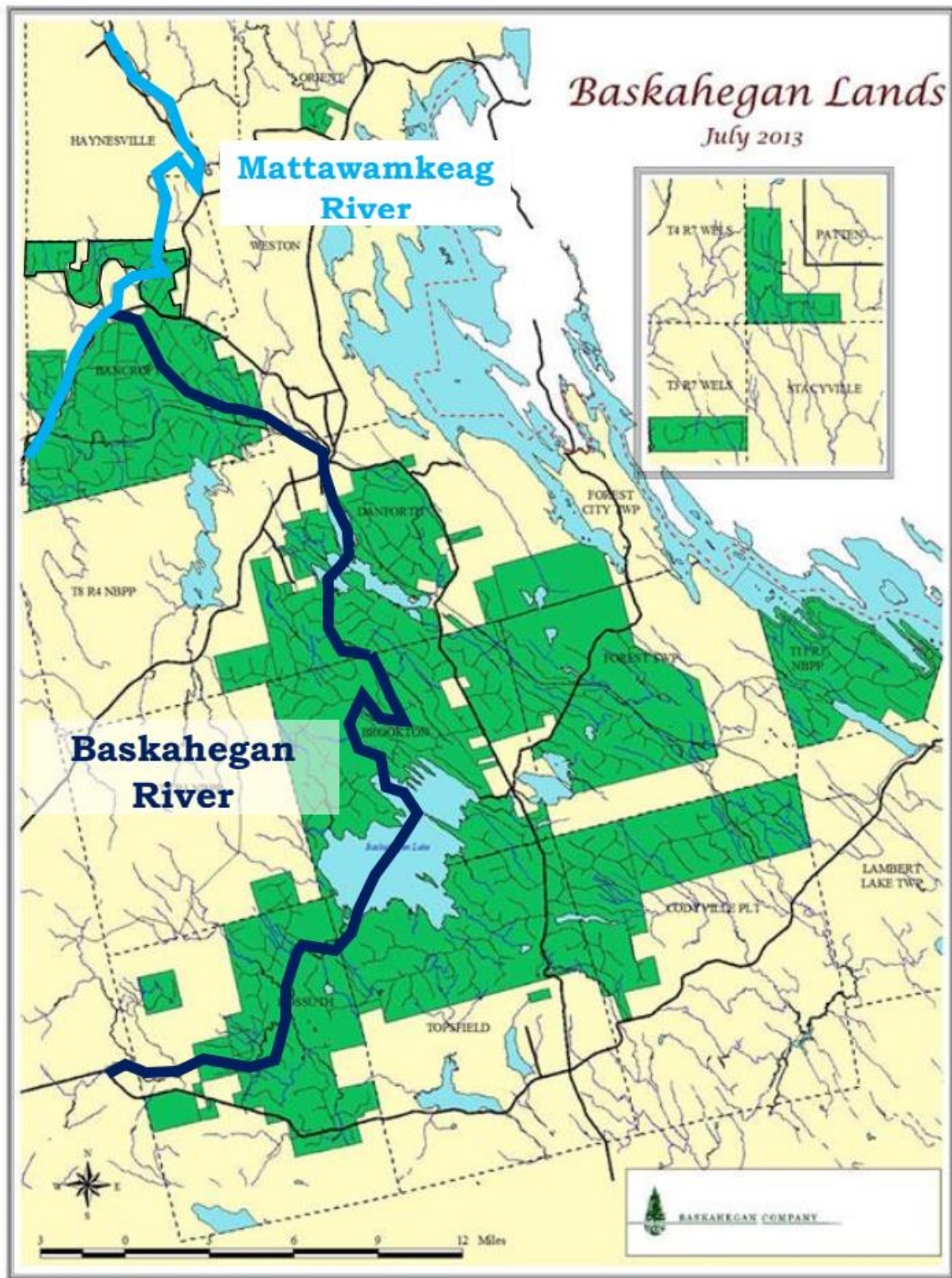


Exhibit #4

BASKAHEGAN WATER TRAIL – MAINE TRAIL FINDER WEBSITE

DESCRIPTION

This lesser known, remote canoe trip is mostly flatwater, and offers excellent opportunities for small mouth bass fishing, moose watching and viewing beaver, otter, eagles, and waterfowl. It makes for a great one to four day soft adventure with several put-in and take-out options. The trip is dependent upon water levels, typically it can be paddled from early May to early June, and in the fall when the water level is sufficient.

From the White Farm Road put-in, the river meanders for 7.8 miles to Baskahegan Lake. While paddling on Baskahegan Lake and the Flowage just south of Danforth is possible in low water, attempting a paddle trip on the stream sections in low water is not recommended.

It is 4.3 miles across Baskahegan Lake to the outlet, where there are remains of a washed-out dam. Stay in the middle of the main chute (easy quick water) to avoid a spike that is on the far right next to the shore.

The stream from the Baskahegan Lake outlet to Crooked Brook Flowage is 9.3 miles. The first stretch travels through a bog, with good opportunities for spotting moose. The last four miles have a little stronger current with a couple of spots that may be class I.

It is 3.5 miles on Crooked Brook Flowage north towards the dam in Danforth. There is a public boat launch in Danforth as an optional take out 0.3 miles before the dam. *Caution: Be sure to take out or portage at this location, before the Danforth dam.* To continue another 8.5 miles to the 2000 Road take out, portage around the dam on the left, taking out just before the dam, and then putting in just before the train trestle or carrying across the street to launch just north of the road bridge.

The 8.5 miles north of Danforth is mostly flatwater with a couple of quick water sections in the middle, and one class I rapid in front of a cabin 0.3 miles before the take out. The take out is located on the right just before the 2000 Road bridge. *Caution: below the bridge the stream turns into class III-IV with ledge drops.* These ledges can be portaged around (a few hundred yards down Bancroft Road) to optionally continue to the Mattawamkeag River.

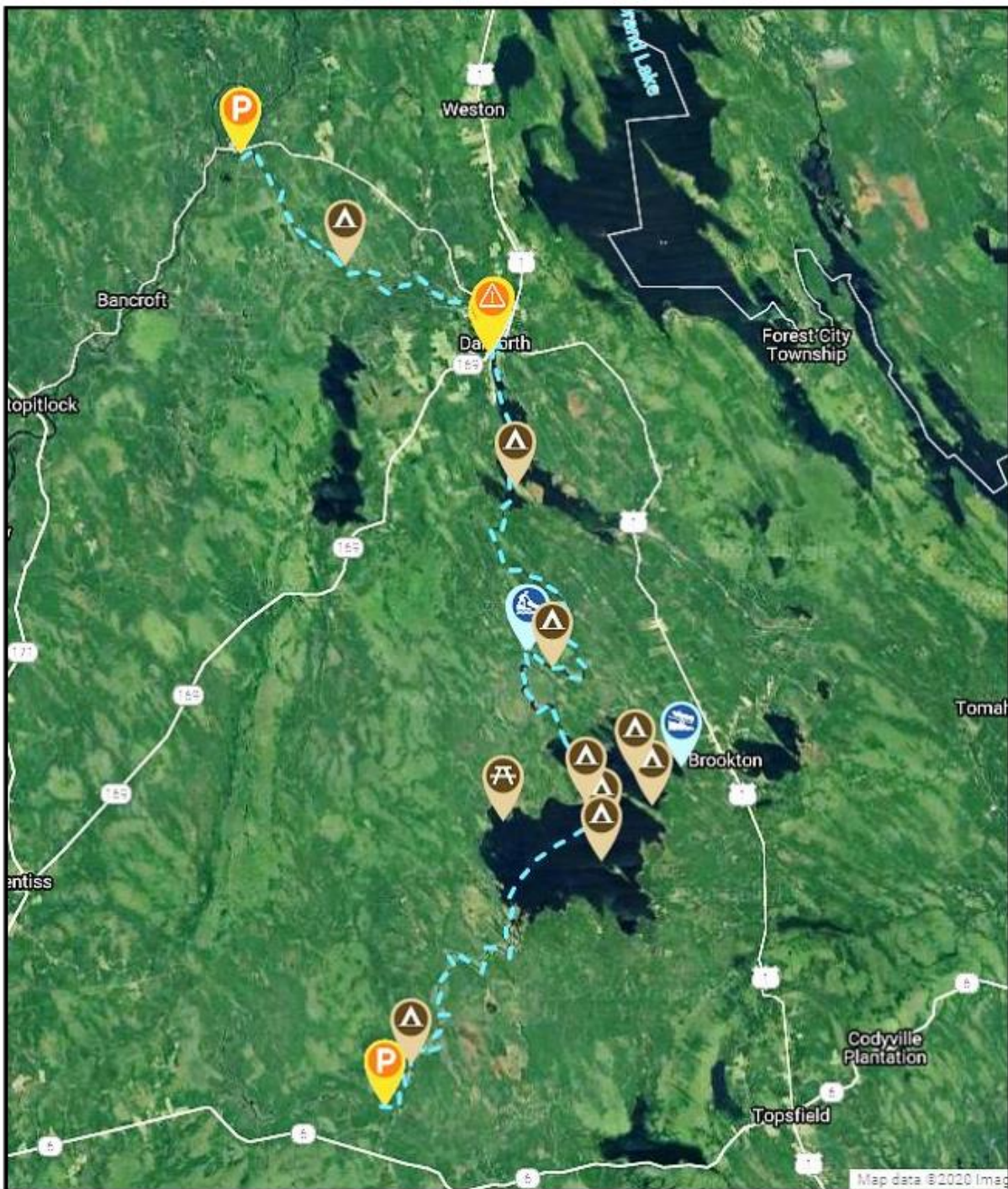
OTHER INFORMATION

A permit is required for campfires. To obtain a fire permit, call the Maine Forest Service, Old Town at (207) 827-1800.

TRAIL MANAGER

For additional information, visit the [Canoe the Wild website](#), or contact:

THE FOLLOWING IS REPRODUCED FROM INTERACTIVE MAP
ON MAINE TRAIL FINDER WEBSITE



: <https://www.maintailfinder.com/trails/trail/baskahegan-stream-race-course-and-paddling-route>