

## “The Beginnings”

### Monument “One” Marker of the International Boundary

#### The Farm Country of Aroostook



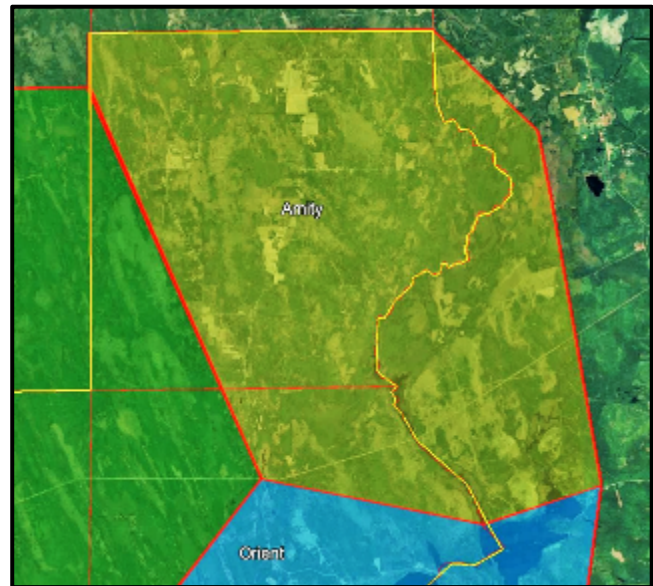
For the GEGR, this 35,000-acre rural area at the northern extremity of the Region is the home of International Boundary marker **Monument “One”** and the beginning of the agricultural region of Aroostook County.

**Monument “One”**, is a large stone and concrete marker erected at the **very source of Monument Brook and the place of beginning of the St. Croix River**. From Monument One, the international boundary commences its southern trek along the meandering thread of the flat and flowing waters of the St. Croix River 125 miles to Passamaquoddy Bay.

Monument One also is the beginning of the **US-Canadian continental Boundary**, a marker that is only replicated in size at the location of where the 49<sup>th</sup> parallel intersects the Pacific Ocean on the western coast of Washington State. This landscape, once more populated with small farms, is now home of a number of seasonal and year-round residences surrounded by the quiet and woody settings along the back roads of **Amity**, Maine.

This farming area of the GEGR is endowed with some of the more productive soils in the upper part of the St. Croix watershed. A natural fault, running in a northeasterly direction thru Monument divides the heavily granite based and glaciated soils of the MDV – Lakes area from the agricultural soils of the Southern Aroostook. Woodlot and commercial timberland owners enjoy a level of timber growth not unlike those same lands in the Mattawamkeag River sections of the Region.

The Beginnings has over 9,000 acres of conserved and publicly-owned forests and wetlands, the largest combined fee-owned conserved lands in the Region. Much of these conservation lands are managed for wildlife habitat including deer wintering areas. These lands are highly accessible with internal road system and adjacency to US Route 1 and to the Boundary Road in **Orient**.



**Monument Brook** is highly remote, water accessible and ecologically significant as a wetland complex, birding and wildlife viewing paradise. There are hundreds of acres of wading bird and waterfowl habitat, and expansive sedge meadows along both the Canadian and US shores. The **Gordon Manual State of Maine Game Management** area lies just to the north of this section of the GEGR.