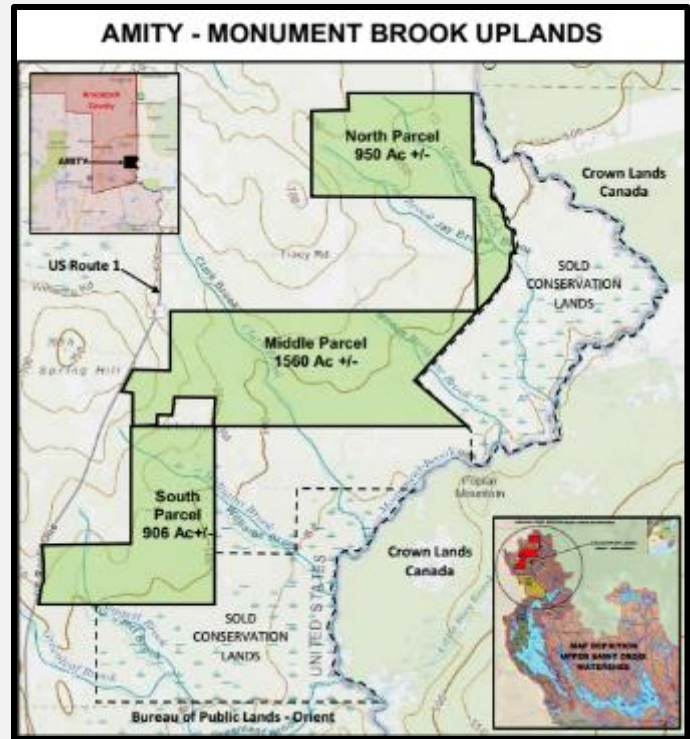


# AMITY – MONUMENT UPLANDS

The “Uplands” of Monument were created upon the division of Amity into two extensive lowland areas situated adjacent to Monument Stream. These wetland complexes, Glendenning and Greenleaf, so-called, were acquired by a local land trust for the purposes of wildlife habitat restoration, management and riparian protection.

The “Uplands”, better described as the productive timberland portions of Amity, consists of three (3) separate tracts or parcels. The North and Middle tracts contain 950 and 1560 acres respectively, and abut the Glendenning complex to the east. The Southerly parcel of 906 acres abuts the Greenleaf complex to the southeast, and fronts on US Route 1, as does the Middle tract. Recently upgraded land management roads provide access to the three parcels; access is either deeded and/or assured by public road frontage. Soils are excellent with some soil types meeting State-wide standards for agriculture. The forests are well-stocked with young and intermediate stands of mixed northern hardwood, spruce and fir.



These Upland parcels, taken together or individually, represent an investment in highly productive Maine timberland harboring many opportunities to practice exemplary forestry. The adjoining conservation lands assure the Monument landscape will remain a well- managed, healthy and productive forest environment in perpetuity.

